

# Food Microbiology



Food  
Water  
Dairy  
Beverage



Online Ordering Available

# Food, Water, Dairy, & Beverage Microbiology

## Table of Contents

1	Contact Plates
3	Petri Plates (Empty, Sterile)
3	Culture Media for Air Sampling
4	Impact Air Sampling
5	Environmental Sampling Sponges
6	Sampling Template
8	EnviroBootie™ Environmental Sampling Bootie
10	Environmental Testing Swabs
12	ATP-Hygiene Monitoring
13	Rapid Non-ATP Hygiene Checks
16	Hand and Surface Sanitizers
17	Sanitation Check Tests
18	Sample Collection
20	Compact Dry™ for Colony Counting
22	Sample Preparation - Dilution Vials
23	Blender Bags
23	Masticator®/Homogenizer
24	Scales and Weighing Dishes
24	Thermometers
25	Disposable Pipettes
26	Water testing for <i>E. coli</i> /Coliforms
27	HardyCHROM™ Chromogenic Culture Media
30	Prepared Media
41	Membrane Filtration
45	Agar Plates for Membrane Filtration
47	Protective Gear
47	Lab Coats, Aprons and Gloves
48	Pathogen Detection
50	Microbiologics® Control Organisms
52	CRITERION™ Dehydrated Culture Media
53	Lab Supplies



### **Hardy Diagnostics Headquarters**

1430 West McCoy Lane  
Santa Maria, CA 93455  
(800) 266-2222 : phone  
(805) 346-2760 : fax  
Sales@HardyDiagnostics.com  
www.HardyDiagnostics.com

### **Distribution Centers**

- Santa Maria, CA - Manufacturing
- Olympia, WA
- Salt Lake City, UT
- Phoenix, AZ
- Dallas, TX
- Springboro, OH - Manufacturing
- Lake City, FL
- Raleigh, NC
- Albany, NY



Copyright © 2014  
Hardy Diagnostics

ISO 13485  
FM 572526

# Environmental Monitoring Contact Plates



## Baird-Parker Agar

For the selective isolation and enumeration of coagulase-positive staphylococci (*Staphylococcus aureus*) on environmental surfaces.

15x60mm contact plate,  
10/pk ..... P16

## D/E Neutralizing Agar

For the enumeration of environmental organisms. The media is able to neutralize most antiseptics and disinfectants that may inhibit the growth of environmental organisms.

15x60mm contact plate,  
10/pk ..... P99

## Eosin Methylene Blue (EMB)

For isolation and differentiation of Gram-negative bacilli from environmental surfaces.

15x60mm contact plate,  
10/pk ..... P09

## HardyCHROM™ ECC

A chromogenic medium for the detection, differentiation, and enumeration of *Escherichia coli* and other coliforms from environmental surfaces (*E. coli* turns blue; coliforms turn red).

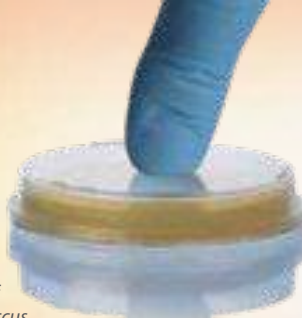
15x60mm contact plate,  
10/pk ..... P17

## Malt Extract

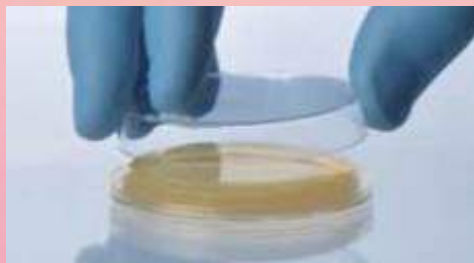
Malt Extract is recommended for the cultivation and isolation of yeasts and molds.

With 0.01% Chloramphenicol,  
15x60mm contact plate,  
10/pk ..... P80

With Lecithin and Tween,  
15x60mm contact plate,  
10/pk ..... P93



**1** Gently press plate to surface to collect sample.



**2** After sample collection, place lid on plate.



**3** Tap lid into place.



**4** Lid is secure.



# Contact Plates Continued

## R2A Agar

R2A is recommended for enumeration of heterotrophic bacteria from environmental surfaces.

15x60mm contact plate,  
10/pk..... P32

## Rose Bengal Agar with Chloramphenicol

For the selective isolation and enumeration of yeasts and molds from environmental surfaces.

15x60mm contact plate,  
10/pk..... P42

## SabDex (Sabouraud Dextrose) Agar

For the cultivation of fungi from environmental surfaces.

15x60mm contact plate,  
10/pk..... P36

## Standard Methods Agar

(Plate Count Agar) For the cultivation and enumeration of microorganisms in dairy products, food, and water.

500ml polycarbonate bottle, 500ml fill,  
10/pk..... U297

## Standard Methods Agar with Lecithin and Tween® 80

For the enumeration of aerobic bacteria from environmental surfaces. Lecithin and Tween® 80 neutralize disinfectants.

15x60mm contact plate,  
10/pk..... P51

## Tryptic Soy Agar (TSA) with Lecithin and Tween 80®, USP

For the general cultivation of microorganisms from environmental surfaces. Lecithin and Tween® 80 neutralize disinfectants.

15x60mm contact plate,  
10/pk..... P34

## Tryptic Soy Agar with 5% Sheep Blood

For the general cultivation of microorganisms from environmental surfaces. 5% sheep blood in TSA base.

15x60mm contact plate,  
10/pk..... P33

## Mannitol Salt Agar (MSA)

For the selective isolation and differentiation of *Staphylococcus* spp. For environmental surfaces.

15x60mm contact plate,  
10/pk..... P98

## Potato Dextrose Agar (PDA) with Chlortetracycline

For use in the cultivation of yeast and mold and for the inducement of sporulation.

15x100mm plate,  
10/pk..... W93



# Petri Plates (Empty, Sterile)

Hardy offers an extensive line of sterile petri plates for all your media-making needs. Contact us for a complete list.

15x100mm, with stacking ring,	
500/case.....	3561
15x100mm, without stacking ring,	
500/case.....	3301
15x100mm, with stacking ring,	
20/bag.....	330120



## Culture Media for Air Sampling

### DG-18 Agar

For the selective isolation and cultivation of xerophilic (dry loving) molds.

15x100mm plate,	
10/pk .....	W85

### Malt Extract

For the cultivation and enumeration of yeasts and molds.

15x100mm plate,	
10/pk .....	W28

*Escherichia coli* (ATCC® 8739)  
colonies growing on TSA.

### Potato Dextrose Agar (PDA), USP

For the cultivation of yeasts and molds.

15x100mm plate,	
10/pk .....	W60

### SabDex (Sabouraud Dextrose) Agar

For the cultivation of yeasts and fungi.

15x100mm plate,	
10/pk .....	W70

### Tryptic Soy Agar (TSA)

For the general cultivation of microorganisms.

15x100mm plate,	
10/pk .....	G60
15x150mm plate, USP	
10/pk .....	H19

See page 4  
for Spin Air  
Samplers



# Impact Air Sampling

## Spin Air Sampler

This innovative microbiological air sampler pulls air in a controlled fashion against the spinning agar plate.

- Bar code connectivity
- A unique rotating plate holder for even surface spread of microorganisms for improved accuracy
- Sampling by volume (not timed) for higher accuracy and reproducibility
- Standard 60mm or 100mm agar plates
- Rechargeable Ni-Metal Hydride 7.2V internal battery pack for up to eight hours of operation
- Delayed activation mode to avoid collector contamination

Each .....5500



## Basic Air Sampler (Low Cost)

The Basic Air is a microbial air sampler that offers fundamental features. It was designed for users that don't need connectivity to barcode, or duplicate simultaneous testing capability (no slave unit). This is an economy version for basic air sampling. Carrying case is not included.

- Utilizes Standard 60mm or 100mm Agar plates which are inexpensive and readily available from Hardy Diagnostics
- Delayed activation mode to prevent the collector from contaminating the sample
- Sampling by volume (not time)
- Rechargeable battery operated for remote sampling

Each .....5533

Basic Air Sampler



See page 3 for a selection of petri plates.



# Environmental Sampling Sponges

## Sampling Sponge, Pre-moistened with Buffered Peptone Water

Sterile cellulose sponge pre-moistened with 10ml of Buffered Peptone Water.

Individually wrapped in foil pouch.

100/box.....BS10BPW1

## Sampling Kit, Pre-moistened with Buffered Peptone Water and Gloves

Pre-moistened sterile cellulose sponge with 10ml of buffered peptone water, individually wrapped in a foil pouch. A pair of sterile sampling gloves, 18oz Twirl 'Em® bag, and one sample identification label are included.

50/box.....BS02BPW1

## Sample Sponge, Pre-moistened with Butterfield's Phosphate Buffer

Sterile cellulose sponge pre-moistened with 10ml of Butterfield's Phosphate Buffer. Individually wrapped in foil pouch.

100/box.....BS10BPB1

## Sampling Kit, Pre-moistened with Butterfield's Phosphate Buffer and Gloves

Pre-moistened sterile cellulose sponge with 10ml of Butterfield's Phosphate Buffer, individually wrapped in a foil pouch. A pair of sterile sampling gloves, 18oz Twirl 'Em® bag, and one sample identification label are included.

50/box.....BS02BPB1

## Sampling Sponge, Pre-moistened with DE Neutralizing Broth

Sterile cellulose sponge pre-moistened with 10ml DE Neutralizing Broth. Individually wrapped in foil pouch.

100/box.....BS10DE1

## Sampling Kit, Pre-moistened with DE Neutralizing Broth and Gloves

Pre-moistened sterile cellulose sponge with 10ml of DE Neutralizing Broth. A pair of sterile sampling gloves, 18oz Twirl 'Em® Bag, and one sample identification label are included. Individually wrapped in a foil pouch.

50/box.....BS02DE1

## Sampling Sponge, Pre-moistened with Neutralizing Buffer

Sterile cellulose sponge pre-moistened with 10ml of Neutralizing Buffer. Individually wrapped in foil pouch.

100/box.....BS10NB1

## Sampling Kit, Pre-moistened with Neutralizing Buffer

Pre-moistened sterile cellulose sponge with 10ml of Neutralizing Buffer. A pair of sterile sampling gloves, 18oz Twirl 'Em Bag®, and one sample identification label are included. Individually wrapped in a foil pouch.

50/box.....BS02NB1

## Dry Speci-Sponge® in a (18oz) Whirl-Pak® Bag

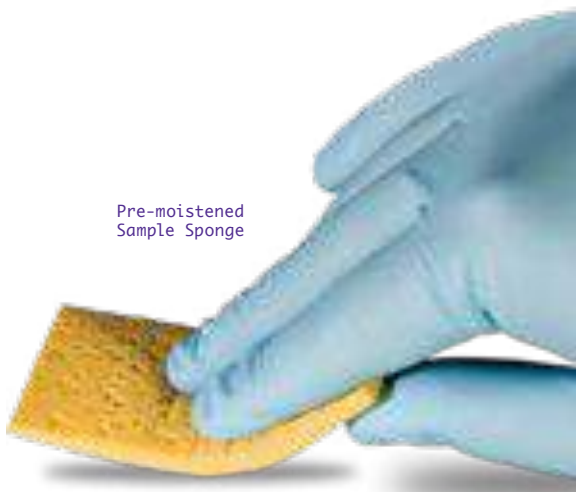
Designed for environmental surface sampling of work areas, equipment, animal carcasses, and any other place where testing for *Listeria*, *Salmonella*, *E. coli*, and other food-borne pathogens is required. The special 4x8cm sponge is free of bactericides and has been tested to be non-inhibitory. For Hydration Fluids, see Prepared Media section of this catalog.

100/box.....B01245WA

With sterile gloves,

100/box.....B01392WA

Pre-moistened  
Sample Sponge





## Poultry Drag Swab

Sterile sampling devices used to sample poultry litter for pathogenic organisms, e.g. *Salmonella*. Each pocket-size kit contains a 30ml-polystyrene vial which encloses a sterile 4-ply 3" x 3" cotton gauze swab (pre-moistened with double strength skim milk) attached to a cord about six feet in length. Also included is a pair of plastic gloves, a label, and a sterile plastic 18oz twirl-style transport bag.

100/box.....DS001

## Whirl-Pak®, Wet Speci-Sponge® Kit with Neutralizing Buffer

This pre-moistened Speci-Sponge® Kit makes environmental surface sampling fast and easy. Perfect for sampling work areas, equipment, animal carcasses, and any other place where *Listeria*, *Salmonella*, and *E. coli* may be found. The sponge comes in a sterile bag and is pre-moistened with 10ml of Neutralizing Buffer. The kit has a shelf life of one year and requires no refrigeration.

100/box (with sterile gloves) ..... B01423WA



## Sampling Template

A disposable, stiff, sampling template that is packaged in a plastic bag and sterilized by irradiation. Used for meat carcass testing and other surface enumeration procedures.

10x10cm (plastic),

50/pk..... T2905C





## EnviroMax Plus® Environmental Sampling Swabs

Sterile, pointed pre-moistened foam tip, 50% neutralizing buffer, and 50% 0.1% peptone water with a polypropylene handle. For the collection transportation and identification of microorganisms from the environment.

25/box.....2588050PF

Sponge-Like  
Material

## Sponge-Stick, with Neutralizing Buffer

Solar-Cult® sterile cellulose sponge pre-moistened with Neutralizing Buffer, attached to a quick release handle, packaged in a sterile bag to make this an all-inclusive sampling system. Remove the handle with attached sponge, collect the sample, release the sponge into the bag, twirl-it closed, and send it to the lab for analysis.

100/box.....SH10NB1



Sponge-Stick, with  
Neutralizing Buffer

# ENVIROBOOTIE™ SAMPLING BOOT SWAB

EnviroBootie™ is a collection system for the monitoring of Salmonella contamination in flock floor litter and other surfaces. This “one size fits all” shoe cover is ready-to-use and pre-moistened with skim milk. Simply remove the EnviroBootie™ from the sterile sample bag, place the boot swab over a plastic boot cover (Cat. no. C14019WA), then walk through the poultry barn. This unique design allows for highly efficient sample collection, secure transport, pre-enrichment incubation, and disposal, all in the same container! EnviroBootie™ can also be used as a sampling mitt for belts, feeders, and other recommended sampling surfaces.

- One size fits all
- Pre-Moistened



## Disposable Plastic Boot Cover

Over-the-shoe plastic disposable boots are easy to slip on and off, have handy tie closure, and are made of strong 4 mil polyethylene. Designed for single use to minimize risk of transmitting infection. Designed to fit up to size 12. Packaged in a convenient dispenser box. 50/box .....C14019WA

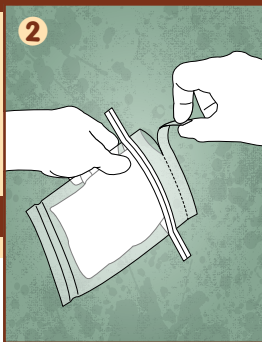
## EnviroBootie™

2 pre-moistened (2X skim milk) boot swabs  
per bag, 50/pk.....EB50

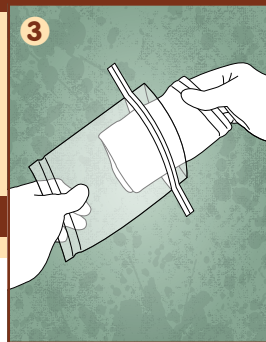
1 pre-moistened (2X skim milk) boot swab  
per bag, 100/pk..... EB100



Slip on disposable plastic shoe cover (Cat. No. C14019WA) to protect shoes and prevent cross-contamination.



Tear off the perforated end of the sterile sample bag.



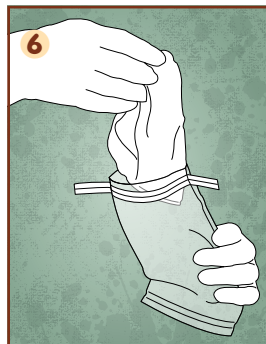
Remove pre-moistened EnviroBootie™ from sterile sample bag.



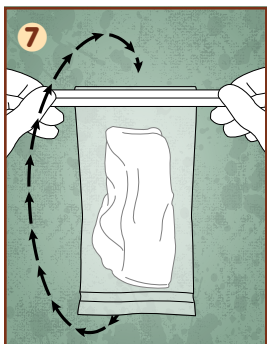
Place EnviroBootie™ over your plastic shoe cover.



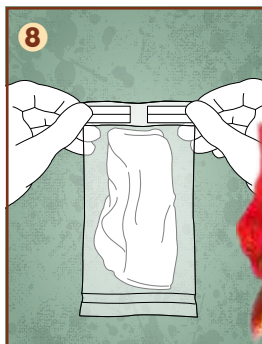
Walk through your sample area.



After collecting sample, place EnviroBootie™ back into sterile sample bag.



Pull the ends of the wire tabs to close the bag. Holding the bag by the tab ends, whirl the bag three complete revolutions to form a leakproof seal.



Fold the tabs over as tightly as possible then send to laboratory for analysis.



# Environmental Testing Swabs



Swab  
attached  
to cap

Dacron®  
Tip



## EnviroTrans™, Swab Kit

(Pre-moistened Ready-to-use)

A ready-to-use swab and tube pre-filled with your choice of five solutions to fit your specific needs! The entire unit is terminally sterilized. Collect and transport your environmental sample with efficiency and ease. Simply remove the cap attached to the dacron swab. Collect your sample by swabbing the surface. Recap, and send to the lab. Each EnviroTrans™ tube contains broth or buffer (see listing). Excellent for detection or enumeration of microorganisms from environmental surfaces or equipment.

EnviroTrans™ Neutralizing Buffer,  
2ml, 20/box ..... SRK20  
5ml, 20/box ..... SRK15

EnviroTrans™ Lethen Broth,  
5ml, 20/box ..... SRK25

EnviroTrans™ Saline, 0.85%,  
0.5ml, 20/box ..... SRK05  
2ml, 20/box ..... SRK30  
5ml, 20/box ..... SRK35

EnviroTrans™ D/E Neutralizing Broth,  
5ml, 20/box ..... SRK45

EnviroTrans™ Neutralizing Saline,  
5ml, 20/box ..... SRK55

## Swabs

Sterile cotton, individually wrapped; wood shaft is 6" long.

100/box..... HD258061WC

Sterile, dacron,  
individually wrapped; plastic shaft  
is 6" long,

100/box..... HD25806

HD258061WC



HD25806

Self-standing  
Vial

## Swab and Tube, no media

A plain sterile dacron swab on a plastic shaft in a round bottom plastic pre-labeled tube without media. Has a tamper-evident seal.

100/case..... 4159BX  
1,000/case ..... 4159CS

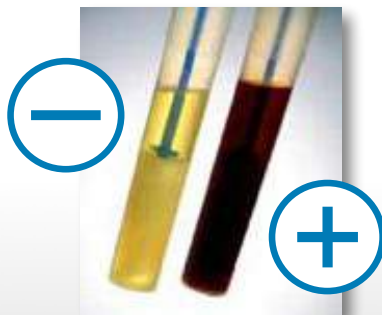




### PDX-LIB *Listeria* (AOAC-RI)

The easiest *Listeria* test available. This test is both reliable and inexpensive with presumptive results available within 30 hours for the most common *Listeria* spp. No sub-culturing or specimen transfers required. Compared to UVM and BLEB, this test provides superior/ equivalent recovery and faster detection of as low as 10-50 heat injured *Listeria monocytogenes* per ml within 24-30 hours of incubation. Comparable results to USDA methods. The Test is AOAC-RI approved. ENVIROSWAB™ Sampling sponges are not included.

PDX-LIB Media, 25/case ..... 2500325  
EnviroMax® Swab, 25/box ..... 2588050PF



### PDX-SIB *Salmonella* (AOAC-RI)

The easiest environmental *Salmonella* test available. This test is both reliable and inexpensive with presumptive results available within 24-48 hours for the most common *Salmonella* spp. No sub-culturing or specimen transfers required. Simply collect your sample, inoculate the PDX-SIB media, and incubate. AOAC-RI approved. ENVIROSWAB™ sampling sponge not included.

PDX-SIB Media, 25/case ..... 2600325  
EnviroMax® Swab, 25/box ..... 2588050PF



PDX-SIB™  
Media  
**Salmonella**,  
Cat. no.  
2600325

PDX-LIB™  
Media  
**Listeria**,  
Cat. no.  
2500325



EnviroMax Plus®,  
Cat. no. 2588050PF

# ATP-Hygiene Monitoring

## SystemSure Plus™ Luminometer

Most cost-effective ATP hygiene monitoring system available

- Simple to use
- Self-calibration at startup
- Programmable Pass/Fail levels
- Stand alone system or downloadable to PC
- Spreadsheet compatible data
- Lightweight
- Durable
- Battery operated
- Includes cable, operation manual, and durable carrying case

Each ..... SS3

Free with Swab Lease Program!

Call 800-266-2222 ext. 5696 for details.

Hygiene Results in  
< 60 Seconds!



1) Collect Sample.



2) Snap to release built in Reagent.



3) Insert into SystemSURE Plus™.



4) Start Measurement (15 secs).



5) Record results.



6) Download to computer if desired.

## UltraSnap™ ATP Swabs (ATP on Surfaces)

Use in conjunction with the SystemSure Plus™ Luminometer.

- All-in one testing device - simple, quick, and easy-to-use
  - Results in seconds
  - Unique liquid-stable reagent for unprecedented accuracy and reproducibility
  - 12-month shelf life at a refrigerated temperature of 2-8 °C, 4-week shelf life at room temperature
  - Measures total ATP present
- 100/box ..... US2020

## AquaSnap™ (ATP in Water)

AquaSnap™ is a user-friendly and self contained ATP water testing device used in conjunction with SystemSure Plus™ Luminometer. ATP in water is an indicator of bacterial presence. The pen-sized testing device is easy-to-use, economical, and gives real-time results. The honeycomb-shaped dipper collects 100µl of water for consistent sample collection. It uses a liquid-stable reagent instead of freeze-dried enzymes, giving it superior reproducibility and sensitivity.

- All in one testing device - simple, quick, and easy-to-use
- Results in seconds
- Unique liquid-stable reagent for unprecedented accuracy and reproducibility
- 12-month shelf life at a refrigerated temperature of 2-8 °C, 4 week shelf life at room temperature

AquaSnap™ Free ATP,  
100/box.....AQ100F  
AquaSnap™ Total ATP,  
100/box.....AQ100

## SuperSnap™ ATP Surface Test

SuperSnap™ is the most sensitive ATP surface test in Hygiene's ATP hygiene monitoring portfolio of products. SuperSnap™ is an all-in-one test which detects extremely low levels of ATP (Adenosine Triphosphate). Used predominantly in Food & Beverage processing facilities as an allergen cross-contamination prevention tool or when dealing with difficult samples, SuperSnap™ can identify food residues at levels similar to protein levels detected by specific allergen tests.

- Sensitivity - Up to 100 times better than other systems
- Excellent hygiene control on Critical Control Points (CCP)
- Allergen prevention
- Process monitoring for perishable/short-life foods and beverages
- Industrial applications with strict cleaning protocols
- Improved detection at very low ATP values (e.g. dairies and beverage processors)
- Easier trending of data at low ATP levels
- Improved Buffer Capacity

100/box.....SUS3000



# Rapid Non-ATP Hygiene Checks

## PRO-Clean™ (Detects Protein Residue)

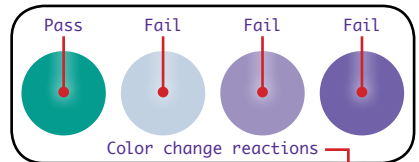
PRO-Clean™ is a quick and easy way to accurately monitor the cleanliness of surfaces to help ensure product quality. PRO-Clean™ detects protein residues left on a surface after cleaning. Simply swab the surface, release the reagent and if protein residue is present the reagent will turn purple. The color change provides a semi-quantitative measure of the surface cleanliness. The more contamination present, the quicker the color change and the darker the purple. PRO-Clean™ quickly validates the hygiene of a surface, allowing immediate corrective action to be taken if necessary.

- Results in under 10 minutes
- All-in-one device, no instrumentation
- 12 month shelf life
- Easy to interpret
- Affordable

100/box.....PRO100

Easy-to-release Snap-Valve™ containing reagent

Write-on Swab Tube



*A Culture of Service™*

## SpotCheck Plus™ (Detects Glucose and Lactose)

Similar to SpotCheck™, but in addition to glucose, it also detects lactose which is found in dairy products such as milk, butter, shakes, creams, and yogurt. This device is designed specifically for hygiene monitoring in the dairy industry.

100/box..... GL100

***Rapid Results!  
SpotCheck™ Plus  
reaction within 60  
seconds.***



## Q-Swab™ Sampling Swab with Buffered Peptone Water

- Ready-to-use sampling swab utilizing the patented snap-valve technology.

250/box..... QS1000

## Q-Swab™ Sampling Swab with Letheen Broth

- Ready-to-use sampling swab utilizing the patented snap-valve technology.

250/box..... QS1200



Increase productivity and efficiency while reducing lab costs by using Q-Swab for your environmental monitoring needs. Q-Swab is a ready-to-use dilution and delivery device to be used in the food and beverage industry for environmental surface sampling. Save time and money by eliminating the need for pipettes and broth preparation.

## ALLER-Snap™ Protein Residue Test Swab

ALLER-Snap™ is a quick and easy way to accurately monitor the cleanliness of surfaces to help ensure product quality. ALLER-Snap™ detects protein residues left on a surface after cleaning.

the purple. ALLER-Snap™ quickly validates the hygiene of a surface, allowing immediate corrective action to be taken if necessary.

- All-in-one test with built-in color chart
- Pre-wetted swab



Simply swab a surface, release the reagent, and if protein residue is present, the reagent will turn purple. The color change provides a semi-quantitative measure of the surface cleanliness. The more contamination present, the quicker the color change and the darker

- Sensitive liquid-stable reagent
- Visible color results in 15 minutes
- Detectable down to 1 µg of protein residue

100/box..... ALS100



## EnSURE Handheld Luminometer

EnSURE is a quality monitoring system that uses one instrument platform to collect, analyze, and report data from multiple quality indicators. The EnSURE system is Hygiena's most sensitive handheld luminometer. Using state-of-the-art technology and patented designs, the EnSURE system is a simple to use, flexible, and accurate quality monitoring system for numerous industrial applications.

### Key Design Features:

- Protected USB connection so no moisture can get into the system
- Removable read chamber design allows for easy cleaning
- Large viewable screen with backlight
- Durable case
- Splash-proof sealed keypad

### Functional Features:

- Multiple tests in one instrument
- Results in 15 seconds
- Sensitive - detects down to 0.1 femtomole of ATP
- 20 programmable test plans
- 250 programmable locations per test plan
- Location name identification on screen
- Programmable user identification
- Ability to store 2000 results
- SureTrend data analysis software

Each.....ENSURE

## Micro-Snap™ Microbial Detection

Micro-Snap is a rapid test for detection and enumeration of specific bacteria. The test uses a novel bioluminogenic test reaction that generates light when enzymes characteristic of specific bacteria react with specialized substrates to produce light. The light generating signal is then quantified in the sensitive EnSURE luminometer. Results are available in 1 to 7 hours, depending upon required level of detection. Single figure organisms can be detected in 7 hours, enabling Micro-Snap to give results in the same working day or shift.

- Production surface monitoring
- Raw materials and finished product testing
- Quantifiable using the EnSURE Luminometer
- Solids, liquids, and filterable products
- Ready-to-use and Convenient
- Result in 7 hours or less
- Low levels of detection
- Pass/Fail result at required detection levels easy to understand
- Quantitative results (CFU counts)
- Qualitative results (presence/absence)
- Equivalent results to other culturing methods
- No specific sample preparation required
- Independently validated

Coliform Test, 100/box.....MSCC100  
E.coli Test ,100/box .....MSEC100



1) Collect Sample



2) Snap to release built in Reagent



3) Insert into EnSURE



4) Start Measurement (15 secs)



5) Record results



6) Download to computer if desired



# Surface Sanitizers

## Alpet D2 Surface Sanitizer

Alpet D2 is a rapid kill, no-rinse, and highly evaporative surface sanitizer/disinfectant spray approved for food contact surfaces. Ideal for general surfaces and water sensitive equipment. Alpet D2 is a combination of isopropyl alcohol and a quaternary ammonium compound.

1.1 Liter, each .....SS10003  
5 gallon tote, each .....SS10002



## Clorox® Broad Spectrum Quaternary Disinfectant Cleaner

Fast-Acting Cleaner Disinfectant

- 33% faster than a leading quat\*
  - Only quaternary registered to kill representatives of all ESKAPE pathogens\*, which cause two-thirds of all HAIs
  - Kills MRSA, HIV, TB, VRE, Hepatitis B and C, and more
  - 90% kill claims
  - Kills bacteria in 2 minutes
  - Fragrance-free
  - Cuts through grease with powerful cleaning agents
  - Gentle on surfaces
- 32 oz spray bottle, each.....30649  
1 gallon, each ..... 30651

\*Based on Federal Master Label as of 8/16/2011.



# Hand Sanitation

## AloeSafe™ Antiseptic Hand Sanitizer Gel

Ethyl alcohol gel with aloe vera, lavender oil, and vitamin E.

- Contains healing vitamin E and moisturizing aloe vera
- Does not cause drying
- Unique formula that's effective without harsh ingredients
- Does not contain propylene glycol (antifreeze additive)
- Does not contain sticky glycerin
- Does not contain estrogenic parabens
- Kills 99.9% of bacteria

2oz bottle with flip top, each .....AS2HD  
4oz bottle with flip top, each .....AS4HD  
16oz pump bottle, each.....AS16HD

**The Only  
Non-Toxic  
Hand Sanitizer!**



## ALPET™ E3 Ethanol Hand Sanitizer Spray

Boasts the equivalency of an E3 rating from the USDA, which allows the user to handle food directly after use. It has been proven effective in killing *E. coli*, *Salmonella*, *Staphylococcus*, as well as other transient microorganisms on bare or gloved hands. The ethanol based formula requires no rinsing and evaporates quickly, which eliminates the need for towels. It is also enriched with a natural emollient to soothe and soften the hands.

1 liter spray bottle

6 per case .....SA10012

## AloeGuard® Antimicrobial Hand Soap

A specially formulated antimicrobial soap with soothing, moisturizing aloe vera to protect your skin's delicate balance. Chloroxylenol (PCMX) provides the high antimicrobial activity necessary for personal protection. Feels and smells great while leaving your hands feeling soft and clean.

1 gallon, each .....7740

18oz pump bottle, each .....7760

4oz bottle with flip top, each .....7725

## EZ Step Stainless Steel Gallon Dispensers

Stainless steel, wall mounted, wrist activated, accommodates one gallon ALPET™ E3 bottle.

Each.....MD10006

Foot activated, accommodates one gallon ALPET™ E3 bottle, stainless steel construction.

Each.....MD10012



AloeGuard®  
Antimicrobial Hand  
Soap 18oz pump bottle

# Sanitation Check Tests

## Hydriion Quat Test Kit

Hydriion Quaternary Test Paper provides a simple, reliable, and economical measure to the concentration of Quaternary Sanitizers. With color matches at 0-100-200-300-400ppm (parts per million), the test paper measures concentrations between 0-400ppm, detecting exhaustion of solutions that should be replaced as well as helping to avoid using excessive amounts of sanitizing agents.

100 tests/kit .....QT10

## Hydriion Chlorine Test Kit

Hydriion chlorine test paper is the simple, reliable, and economical way to measure the concentration of free available chlorine in sanitizing solutions. This test paper measures concentrations between 10-200 ppm (parts per million), with color matches at 10, 50, 100 and 200ppm. The distinct color match at each full unit makes it easy for the user to identify the correct chlorine level.

200 tests/kit .....CM240



Hydriion Quat Test Kit

Hydriion Chlorine  
Test Kit

## Chloride QuanTab® Test Strips

Fast-Acting Cleaner Disinfectant. These test strips quickly and quantitatively determine chloride levels in water samples. After dipping in the sample, the strip changes color and can be compared against an included scale for an accurate reading.

40 test strips/bottle .....2744940



# Sample Collection

## Whirl-Pak® Bags



### Whirl-Pak®, Stand-up/Write-on

A special gusset creates a flat bottom when the sample is placed in the bag, allowing the bag to stand completely on its own. May be used to hold liquids or solids and has a convenient write-on strip.

4oz, 500/box.....	B01364WA
18oz, 500/box.....	B01365WA
138oz, 100/bx .....	B01542WA

### Whirl-Pak®, Write-on Bags (Non-Stand-up)

White write-on strip to make sample identification easier and more convenient. Easily write with ballpoint pen, pencil, or felt tip marker. The paper-like finish virtually eliminates ink smearing and provides a surface that will accept a variety of writing instruments.

1oz, 500/box .....	B01067WA
2oz, 500/box .....	B01064WA
4oz, 500/box .....	B01062WA
18oz, 500/box .....	B01065WA
24oz, 500/box.....	B01297WA
55oz, 500/box.....	B01195WA

### Whirl-Pak®, Thio-Bag (Water Sampling)

Specially designed for sampling chlorinated water, economical, and convenient to use. This single service, sterilized, lightweight, unbreakable container is always ready for immediate use. Used by many states and EPA approved, this strong, transparent bag holds a nontoxic, nonnutritive tablet containing 10mg of active sodium thiosulfate to neutralize chlorine at the time of collection.

100ml, 100/box.....	B01364WA
300ml, 100/box.....	B01254WA

## Sample Cups

### SureTight™ Sample Cups

Tight sealing screw cap ensures that sample will arrive in the lab safe and dry! Patented lid designed to securely lock in sample. Includes tamper-evident tab, identification label, and graduation lines on sides. Sterile, 90ml plus capacity.

400/case ..... 243810



### Specimen Container, Sterile, Individually Wrapped

Specimen container with green 1/4-turn screwcap

- Tri-lingual patient ID label
- Graduated to 120ml
- Polypropylene construction
- Dimensions: Diameter: 2-1/4", Height: 2-7/8"

100/case..... 5913



### Flip-Lok™ Vials

Suited for a wide variety of applications. Great for sample collection and storage. Flip-Lid allows for easy one-handed opening. Leak resistant technology forms a water tight seal. Economically priced! 100% Recyclable! Graduated etched lines at 90 and 99ml. 250/case..... 3538



## Tongue Blades/ Sampling Sticks

Smooth, splinter-free tongue blades made from Northern White Birch. Individually wrapped, sterile,  
100/box ..... 25705



## Water Sampling Vials

Meets all EPA requirements for a microbiological container for water and wastewater testing. All vials are pre-sterilized polypropylene with a hinged lid. Thiosulfate tablet neutralizes chlorine in the sample.  
120ml, 200 per box,  
With thiosulfate tablet..... EPA120T83P  
Without thiosulfate tablet.....EPA12083



## Scoops

### Sampler Scoops, disposable

Designed to gather small amounts of sample material, these sterile sampling spoons come in four sizes. The long handle reaches easily into confined areas and minimizes the potential of personal contact with sampled material.

Sterile, disposable, individually wrapped  
¼ Teaspoon, 200/pk..... 56925109  
½ Teaspoon, 200/pk..... 56925131  
1 Teaspoon, 200/pk..... 56925164  
1 Tablespoon, 200/pk..... 56925197



## Dippers

### Dipper with removable handle

Dipper consists of a blue polypropylene container with a removable handle. It is shock resistant and is assured Sterile 10<sup>-3</sup>. Each dipper is individually packaged in a tamper-evident single zip bag.

40ml, screw cap, 250/case..... TAT3001  
90ml, hinged cap, 150/case ..... TAFL101  
125ml, screw cap, 100/case .....TAT5201  
180ml, screw cap, 100/case.....TAT5302





Compact Dry™ is a ready-to-use system reducing the time needed to perform microbial testing on food, beverage, meat, cosmetics, and raw materials. Place 1ml of sample onto the plate and incubate. Colonies grow and develop specific colors from chromogenic substrates. This provides for easy organism differentiation and counting.

## Significant advantages over the competition.

- Room temperature storage
- 18 month shelf life from date of manufacture
- Self diffusing media
- Stackable
- Write-on area
- Easy to Handle and Pick up
- Simple to pick colonies for subculturing
- Easy read-out of results



### Compact Dry™ TC (Total Count)

Compact Dry™ TC is a medium for total viable bacterial count. Growing colonies appear red due to redox indicator tetrazolium salt. Compact Dry™ TC is AOAC, MicroVal and NordVal approved.

100/pk.....TPC100

### Compact Dry™ EC (*E. coli* and Coliforms)

Compact Dry™ EC contains two kinds of chromogenic enzyme substrates: Magenta-Gal and X-Gluc. *E. coli* forms blue colonies, Coliforms turn red. The total coliform group count is the sum of both the red and blue colonies.

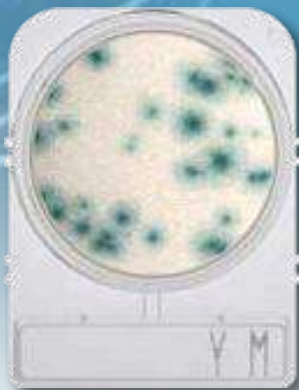
100/pk.....EC100



### Compact Dry™ CF (Coliforms)

Compact Dry™ CF is an easy tool for the detection of coliforms. Coliforms grow with blue/blue green colonies as the recipe contains the chromogenic enzyme substrate X-GAL. The growth of bacteria other than coliforms is mainly inhibited but in case of growth they form colorless colonies.

100/pk.....CF100



### Compact Dry™ YM (Yeast and Mold)

With Compact Dry™ YM, yeasts and mold can be differentiated by color. The medium contains the chromogenic enzyme substrate X-Phos which turns blue with many yeasts. Molds form fluffy colonies with a characteristic color.

100/pk.....YM100



### Compact Dry™ XSA (Staphylococcus aureus)

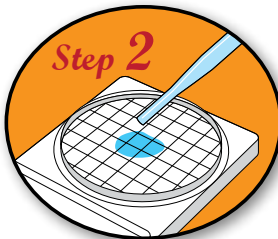
Compact Dry™ XSA determines *Staphylococcus aureus* by means of selective growth of *Staphylococcus* and differentiation by egg yolk reaction. *S. aureus* generates blue pigments which result in blue/blue green colonies.

100/pk.....XSA100

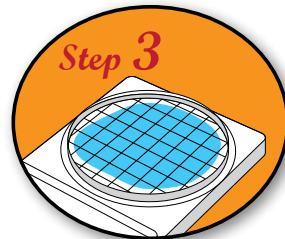
## How to use:



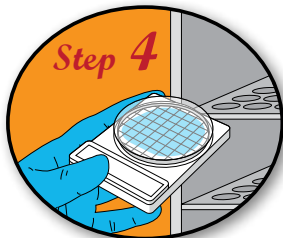
Remove protective cap from Compact Dry™ plate.



Drop 1ml of specimen (dilute if necessary) in the middle of the dry sheet.



Specimen diffuses automatically into the plate, transforming the dry medium to gel.



Attach the cap, and incubate for prescribed time. Count the number of colonies that appear.



is manufactured for Hardy Diagnostics by



**NISSUI PHARMACEUTICAL CO., LTD**

# Sample Preparation Dilution Vials

## Dilu-Lok™ Dilution Vials

The Dilu-Lok™ eliminates the time and money spent on preparing your own dilution vials! Our pre-filled dilution vial is designed especially for the food, dairy, and water industries. Vials are filled to 90ml or 99ml with a variety of buffering solutions. Each lot is meticulously tested for pH, sterility, and fill volume. Designed and packaged to eliminate leaking.

### Butterfield's Phosphate Buffer

90ml fill, 50/pk .....D590  
99ml fill, 50/pk .....D599

### Phosphate Buffer with MgCl

90ml fill, 50/pk .....D690  
99ml fill, 50/pk .....D699

### Peptone Water 0.1% (Irradiated)

90ml fill, 50/pk .....D290  
99ml fill, 50/pk .....D299

### Deionized Water

90ml fill, 50/pk .....D090  
99ml fill, 50/pk .....D099

### Buffered Peptone Water

90ml fill, with 1% Tween® 20, 50/pk.....D085  
90ml fill, 50/pk .....D080

**Save time and money  
with the Dilu-Lok II™  
pre-filled dilution vial**



### Simple...

Easy-to-remove, perforated, shrink wrap ensures product integrity.



### Certified...

Each case is delivered with a certificate of quality.



### One-Handed...

Hinged lid allows for easy opening.



### Large Opening...

A wide 45mm opening accommodates most sample sizes.



### Leak-Proof...

Recently re-engineered for an improved seal.



**Prefilled  
Ready-to-use**

One handed  
easy-opening



Clarified  
Polypropylene  
so you can  
see your  
sample



# Blender Bags

## Whirl-Pak® Blender Bag

Plain sterile bag for use in all types of homogenizing blenders. Made from sturdy blended polyethylene.

7-1/2" x 12" (19cm x 30cm),

3ml (.076mm) thick, 1,000/box .....B01421WA

15" x 20" (37.5cm x 50cm),

4ml (.102mm) thick, 250/box ..... B01474WA

## Whirl-Pak®, Sterile Blender Filter Bags

Specially designed for use with homogenizer blenders. These bags are sterile and are made from extra-heavy polyethylene with a strong perimeter seal. Features a filter layer to separate the liquid and solids, allowing for easy pipetting of the sample.

6 in x 9 in, 250/box..... B01348WP

7.5 in x 12 in, 250/box .....B01318WP

## BagPage® Sterile Blender Filter Bags

BagPage® is a sterile blender bag equipped with a full-surface filter, perfect for the microbiological analysis of pasty samples. Made of Multilayer®, a reinforced multicoated complex, it is resistant for the homogenization of any sample to analyze.

- Sterile, approved for food contact
- Filtration of sample during homogenization
- Ideal for automatic plating and colony counting
- Large convenient opening
- Compatible with any blender

190x300mm, 400ml fill, 500/case .....122025IS

180x95mm, 100ml fill, 500/case ..... 121025IS



# Masticator®/ Homogenizer Blender

An easy-to-use, reliable machine designed to handle almost any sample. Offers clean, fast, contamination-free sample homogenizing. The Masticator® features a stainless steel compartment, stainless steel paddles, a hinged door that removes easily for cleaning, and maintenance-free, self-lubricating parts. Homogenizes samples from 80-400ml. Each ..... B01420WA

# Scales and Weighing Dishes

## Precision, Electronic Scale

Excellent for weighing out food samples and for general laboratory use. Digital read-out from 0 to 610 grams. The high-precision portable balance offers a range of built-in applications with Swiss quality in a compact design.

Each .....ML601E

Measures to  
1/10th of  
a gram.



## Weighing Dishes

Disposable plastic weighing dishes with flat bottoms, sloping sides, and round corners. Polystyrene composition is resistant to dilute acids, alcohols, and bases and will withstand temperatures to 60 °C. Ideal for handling both liquids and solids and are available in a choice of sizes to suit your specific needs.

### Polystyrene

Small, 1-5/8" x 1-5/8" x 5/16"

500 per case .....3620

Medium, 3-1/2" x 3-1/2" x 1"

500 per case .....3621

Large, 5-1/2" x 5-1/2" x 7/8"

500 per case .....3622

### Disposable, Aluminum

102mm, 50/pk..... 1217730

# Thermometers

## Exact-Temp™ Thermometers

Thermometer probe stays inside the refrigerator or incubator; digital display stays outside. No need to open the door! Temperature probe remains in plastic bottle with insulating liquid. Thermometer is traceable to National Institute of Standards and Technology (NIST) with certificate. Min/Max alarm settings with nine foot cord. Choose between Celsius and Fahrenheit. Accurate up to  $\pm 0.6$  °C for precise measurements, Resolution: 0.1 °C. Display size is 1.75 x .75 inches for easy viewing, powered by one AAA battery (included).



## VWR Infrared Thermometer Gun with Laser Beam Sighting

Traceable. Small, lightweight unit takes temperature readings of any surface in less than one second. Laser sighting beam permits direct aim at target surface. Use for food, pharmaceuticals, electronics, safety inspection, and any liquid or solid. Temperature Range: -60 to 500 degrees C (-76 to 932 degrees F).

- Backlighting
- Data hold (freezes display reading)
- Laser
- Low-battery indicator
- Celsius/Fahrenheit button

Each ..... 12777846



Type	Certified Temp.ure	Temperature Range	Cat. no.
Freezer	-20.0 °C	-50 °C to 70 °C (-58 °F to 158 °F)	F80301
Refrigerator	4.0 °C	-50 °C to 70°C (-58 °F to 158 °F)	R80301
Incubator	37.0 °C	-50 °C to 70 °C (-58 °F to 158°F)	I80301

# Disposable Pipettes

Hardy Diagnostics offers plastic, disposable, pipets featuring a one-piece construction designed to eliminate the risk of breakage and sample retention. Clear black graduation marks prevent ambiguity and guarantee precise liquid reading.

- Calibration certified for accuracy
- Aerosol barrier filter plug
- Ergonomic design for use in tight spaces
- Reverse graduations
- Negative graduations (not on the 25ml size)
- Fits all major brands of pipettors
- Calibrated to deliver (TD)
- Meets ASTM E934

## Sterile, Individually Wrapped

1ml Pipet, 500/case .....	1700
2ml Pipet, 500/case .....	1720
5ml Pipet, 250/case .....	1740
10ml Pipet, 200/case .....	1760
25ml Pipet, 100/case .....	1780

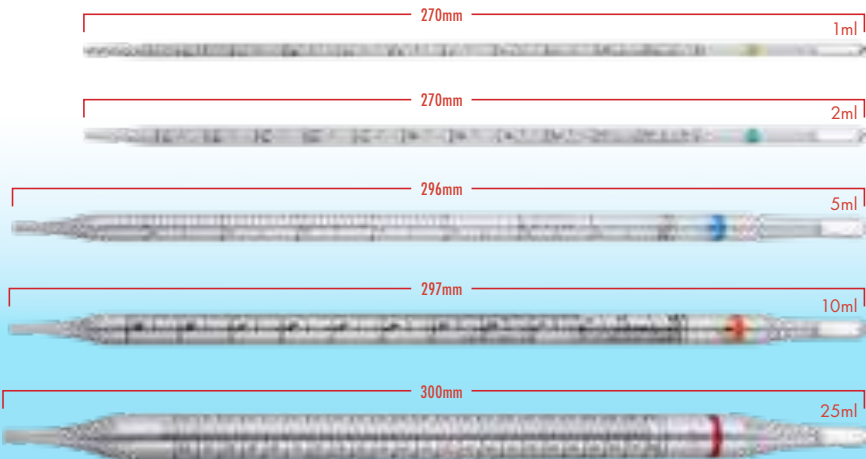
## Sterile, 25 Per Pack

1ml Pipet, 1,000/case .....	1710
2ml Pipet, 1,000/case .....	1730
5ml Pipet, 375/case .....	1750
10ml Pipet, 250/case .....	1770

## Non-Sterile, 25 Per Pack

1ml Pipet, 1,000/case .....	1715
2ml Pipet, 1,000/case .....	1735
5ml Pipet, 375/case .....	1755
10ml Pipet, 250/case .....	1775

The wider tips accommodate more viscous liquids.



## Portable Pipet Controller

A rechargeable electronic pipetting aid designed for use with glass or plastic serological pipets in the 0.1 to 100ml volume range. It is lightweight and ergonomically designed for effortless pipetting even during extensive use.

- Low battery indicator
  - Ergonomic design
  - Powerful 3-speed engine
  - Safety valve and replaceable membrane filter for double protection against fluid and aerosol contamination
  - Removable, autoclavable nose cone
  - Up to eight hours of continuous use on a single charge
- Each.....3380

# colitag™

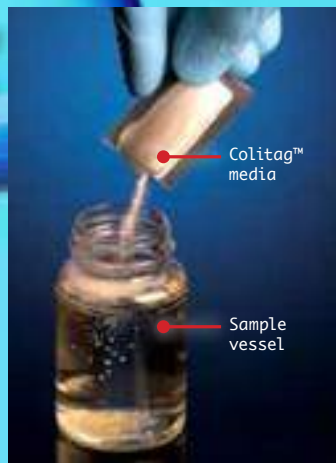
Water testing for  
*E. coli*/Coliforms

**16  
Hour  
Test**



**Ensuring Safe  
Water!**

Simply add  
Colitag™  
powder  
to water  
sample.  
Incubate  
for 16  
hours.



Positive for  
Coliform (Yellow).



Positive for *E. coli*  
under UV light  
(Fluorescent Blue).

Modified Colitag™ is the first definitive water test system for Coliforms and *E. coli*.

- Allows you to run a traditional Presence/Absence (P/A) or MPN format.
- Detects as low as one CFU of total coliform or *E. coli* bacteria per 100ml water sample.
- Resuscitates chlorine injured bacteria.
- Growth inhibitors provide selectivity without affecting recovery of target organisms.
- Questionable positive *E. coli* results eliminated with bright blue fluorescence.
- Simultaneously provides 16-hour fecal coliform and *E. coli* determination.

Colitag™ *E. coli*/Coliforms Media Powder additive for 100ml samples.

100/pk.....46000013

Sample vessel with quick-dissolve Sodium thiosulfate, screw cap with tamper evident seal.

100/pk..... 46000121C

Colitag™ Comparator Positive control for visual and fluorescent read-out, 100ml bottle.

Each.....46000040

UV Lamp, 6 Watt, 365nm, long wave, hand held

Each..... UVL56



# HardyCHROM™

## Chromogenic Culture Media



### HardyCHROM™ ECC (*E. coli*/Coliforms)

HardyCHROM™ ECC (*E. coli*-Coliforms) is a chromogenic medium recommended for the detection, differentiation, and enumeration of *Escherichia coli* and other coliforms in food or water samples based on colony color.

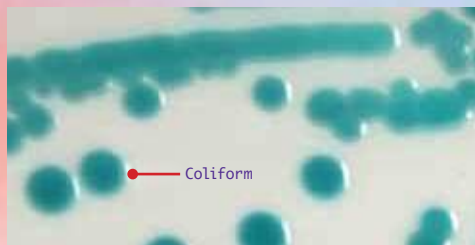
Routine testing to assess the sanitary quality of food and water is directed at the detection and enumeration of indicator organisms rather than pathogens. The coliform group of organisms is recognized as the principal indicator of unsanitary conditions. They are present in the intestinal tract of man and other animals, and non-fecal coliforms are found in many areas of the environment, including in soil and on plants.

- Allows for the detection of *E. coli* and other coliforms.
- *E. coli* can be identified as pink to violet colored colonies on the plate.
- Other coliform bacteria appear as turquoise colonies.
- Organisms other than coliforms or *E. coli* (including approximately 4% of *E. coli* strains and most O157 strains) appear as white or colorless colonies.
- Chromogenic substrates allow specific microorganisms to be recognized by their colony color
- Selective agents have been added to inhibit growth of Gram-positive and other non-coliform bacteria.

15x100mm plate, 10/pk .....G303



*Escherichia coli* (ATCC® 25922) colonies growing on HardyCHROM™ ECC incubated aerobically for 24 hours at 35 °C.



*Klebsiella pneumoniae* (ATCC® 13883) colonies growing on HardyCHROM™ ECC incubated aerobically for 24 hours at 35 °C. Typical of all coliforms.

### HardyCHROM™ Listeria

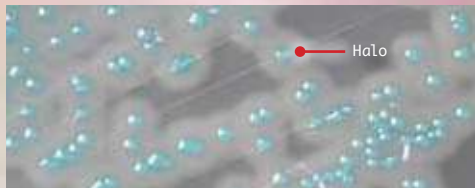
HardyCHROM™ Listeria is a chromogenic medium recommended for the selective isolation, differentiation, and enumeration of *Listeria monocytogenes* from food and environmental samples by colony color and appearance.

HardyCHROM™ Listeria contains specific chromogenic substrates that result in all *Listeria* species producing turquoise colored colonies when the substrate is hydrolyzed by specific enzymes. Furthermore, this medium is able to detect the phospholipase activity (resulting in the halo effect) specific to the two pathogenic *Listeria* species: *L. monocytogenes* and *L. ivanovii*.

- These two species will produce turquoise colored colonies surrounded by an opaque white halo.

- While *L. ivanovii* is rare in clinical samples, further tests are needed to definitively differentiate between these two species.
- Organisms other than *Listeria* are inhibited or grow as colorless or turquoise colonies without halos.

15x100mm plate, 10/pk .....G317



*Listeria monocytogenes* (ATCC® 15313) colonies growing on HardyCHROM™ Listeria showing the white halo surrounding the colonies. (*Listeria ivanovii* will appear the same.)

## HardyCHROM™ O157

HardyCHROM™ O157 is a selective and differential medium recommended for the isolation of enterohemorrhagic *E. coli* O157 from food and environmental sources. Chromogenic substances in the medium facilitate detection by color.

HardyCHROM™ O157 was developed as a medium for differentiating *E. coli* O157 from non-*E. coli* O157 based on colony color, due to the presence of specific chromogenic substrates. These chromogens are biochemical compounds that produce a visible color change when degraded by specific microbial enzymes.

- *E. coli* O157 produces purple-pink colonies on the plate.
- Organisms other than *E. coli* O157 will be inhibited or appear as blue colonies.
- Provides an initial screen intended to isolate colonies for further testing.

Not for human diagnostic use.

## HardyCHROM™ Sakazakii

HardyCHROM™ Sakazakii is a chromogenic medium recommended for the selective isolation and differentiation of *Cronobacter* (*Enterobacter*) *sakazakii* from other members of the *Enterobacteriaceae* family based on colony color.

- It is necessary to confirm isolated purple-pink colonies taken from HardyCHROM™ O157 with a latex agglutination test (Cat. no. PL070HD), antisera (Cat. no. 295798), or other test methods for complete identification.
  - Testing for the H7 antigen (Cat. no. 221591, 3ml or Cat. no. 295569, 5ml).
- 15x100mm plate, 10/pk ..... G305



*E. coli* O157 (ATCC® 35150) produces smooth purple-pink to mauve colonies at 24 hours.

*C. sakazakii* is a Gram-negative, rod-shaped opportunistic pathogen associated with a rare, but life-threatening form of meningitis and necrotizing enterocolitis in neonates. The source of infection has been linked to the ingestion of powdered milk-based infant formula intrinsically contaminated by *C. sakazakii*. The organism is both thermotolerant and resistant to dessication which enables it to survive manufacturing processes.

- *C. sakazakii* produces smooth, turquoise colonies on HardyCHROM™ Sakazakii as a result of unique enzyme interactions with chromogenic substances.
- Other members of the *Enterobacteriaceae* family produce white or colorless colonies with or without black centers.
- All Gram-positive bacteria and yeast will be inhibited on this medium.

15x100mm plate, 10/pk .....G315



*Cronobacter sakazakii* (ATCC® 29004) colonies growing on HardyCHROM™ Sakazakii incubated aerobically for 24 hours at 35 °C.

## HardyCHROM™ Salmonella

HardyCHROM™ Salmonella is a chromogenic medium recommended for the selective isolation and differentiation of *Salmonella* spp. from other members of the *Enterobacteriaceae* family based on colony color.

Selective agents inhibit the growth of Gram-positive organisms. Chromogenic substrates are broken down by specific microbial enzymes resulting in distinct colony color.

- *Salmonella* species use only one of the chromogens producing deep pink to magenta colored colonies.
- Bacteria other than *Salmonella* spp. may utilize the other chromogenic substrates and produce blue colonies.
- If none of the substrates are utilized, natural or white colored colonies will be present.
- *E. coli* will be partially inhibited.

15x100mm plate, 10/pk ..... G309



*Salmonella*

*Salmonella enterica* (ATCC® 14028) colonies incubated aerobically for 24 hours at 35 °C. Typical of all *Salmonella* spp.

## HardyCHROM™ Staph aureus

HardyCHROM™ Staph aureus allows for the rapid and reliable detection of *Staphylococcus aureus*. This medium contains a special chromogenic mix that allows for the differentiation of *Staphylococcus* spp.

- *Staphylococcus aureus* can be identified as smooth, pink colored colonies on the plate.
- Other organisms may appear as colorless, blue or cream colonies or will be inhibited.
- *Staphylococcus saprophyticus* will appear as turquoise colored colonies.
- *Staphylococcus epidermidis* will be inhibited.

15x100mm plate, 10/pk ..... G311



*Staphylococcus saprophyticus* (ATCC® 15305) colonies incubated aerobically for 24 hours at 35 °C.

*Staphylococcus aureus* (ATCC® 25923) colonies incubated aerobically for 24 hours at 35 °C.



# Prepared Media

Plates, Bottles,  
and Tubes

Visit our website @  
[www.HardyDiagnostics.com](http://www.HardyDiagnostics.com)  
for complete listings of  
over 3,500 prepared  
media products!



## **Bacillus Cereus Selective Agar**

A selective medium for the detection of *Bacillus cereus*.  
15x100mm plate, 18ml fill, 10/pk .....G156

## **Baird-Parker Agar**

For selective isolation and enumeration of coagulase-  
positive staphylococci (*Staphylococcus aureus*) from  
food and environmental surfaces.  
15x100mm plate, 18ml fill, 10/pk .....G96

## **Bile Esculin Agar (BEA)**

For the detection of group D streptococci, including  
enterococci.  
15x100mm plate, 18ml fill, 10/pk ..... G12

## **Blood Agar, 5%**

Tryptic Soy Agar with 5% Sheep Blood, for the  
cultivation of microorganisms.  
15x100mm plate, 19ml fill, 10/pk ..... A600

## **Brain Heart Infusion (BHI) Agar**

For the cultivation of microorganisms.  
20x125mm tube, 10ml slant, 20/pk.....L35

## **Brilliant Green Agar**

For the selective isolation and differentiation of  
*Salmonella* spp.  
Brilliant Green Agar with Novobiocin, 15x100mm plate,  
10/pk.....G175  
Brilliant Green Agar,  
15x100mm plate, 18ml fill, 10/pk .....G75



## Brilliant Green Bile Broth

For the detection of coliforms in water and food.

Contains a durham tube for gas detection.

16x125mm tube with durham tube, 10ml fill,  
20/pk ..... K66

20x125mm tube with durham tube, 13ml fill,  
20/pk ..... K09

## Brucella Agar with H & K

For the cultivation of anaerobic bacteria.

15x100mm plate, 19ml fill, 10/pk ..... A30

## Brucella Broth

Recommended as a general purpose broth for the cultivation of microorganisms.

13x100mm tube, 1ml fill, 20/pk ..... R18

## Buffered Listeria Enrichment Broth

**(BLEB) Base BAM Formulation** Requires

selective supplement K183. Buffered Listeria Enrichment Broth Base, BAM formula.

600ml polycarbonate wide mouth bottle, 225ml fill,  
12/pk ..... U233

## Buffered Listeria Enrichment Broth

**(BLEB) Selective Supplement**

For use as a supplement with Buffered Listeria Enrichment Broth Base (BAM Formulation), Cat. no. U233.

16x100mm tube, 3.4ml fill, 20/pk ..... K183

## Buffered Peptone Water

A pre-enrichment used for increasing the recovery of injured *Salmonella* spp. from food and other samples prior to selective enrichment and isolation.

### Bottles

500ml polycarbonate bottle, 225ml fill,  
10/pk ..... U142

500ml polycarbonate bottle, 400ml fill,  
10/pk ..... U143

### Tubes

16x125mm tube, 9ml fill, 20/pk ..... K107

16x125mm tube, 10ml fill, 20/pk ..... K195

## Butterfield Phosphate Buffer

For preparation of dilutions for plate count and other laboratory tests.

### Polycarbonate Bottles

500ml bottle, 450ml fill, 10/pk ..... U150

500ml bottle, 225ml fill, 10/pk ..... U151

500ml bottle, 400ml fill, 10/pk ..... U154

500ml bottle, 500ml fill, 10/pk ..... U190

500ml bottle, 250ml fill, 10/pk ..... U195

500ml wide mouth bottle, 225ml fill, 10/pk ..... U123

### Polypropylene Bottles

125ml bottle, 100ml fill, 12/pk ..... U290

### Tubes, Polypropylene

13ml, polypropylene tube, screw cap, 9ml fill

20/pk ..... K119

### Tubes, Glass

16x125mm tube, 9.9ml fill, 20/pk ..... K208

16x125mm tube, 9ml fill, 20/pk ..... K109

20x125mm tube, 9ml fill, 20/pk ..... K209

### Dilu-Lok™ II Dilution, Flip-top Vial, polypropylene

145ml bottle, 90ml fill, 50/box ..... D590

145ml bottle, 99ml fill, 50/box ..... D599

See page 22 for complete selection of Dilu-Lok™



## Campy Cefex Agar, Modified

For selective isolation of cephalothin resistant

*Campylobacter* spp. such as *C. jejuni*, *C. coli*, and *C. lari*.

15x100mm plate, 18ml fill, 10/pk .....A122

## Campylobacter (CVA) Agar

For selective isolation of *Campylobacter* species,

particularly *C. jejuni* and *C. coli*, from food samples. CVA

(Cefoperazone, Vancomycin, Amphotericin B)

15x100mm plate, 18ml fill, 10/pk .....A40

## CIN Agar

Cefsulodin-Irgasan-Novobiocin (CIN) Agar, for for the isolation of *Yersinia* and *Aeromonas*.

15x100mm plate, 18ml fill, 10/pk .....G20

## Columbia Blood Agar

A general growth medium for cultivation and hemolytic determination of fastidious and non-fastidious microorganisms.

15x100mm plate, 17ml fill, 10/pk ..... A16

15x100mm plate, 17ml fill, 100/box .....A16BX

## Cooked Meat Medium

For cultivation of aerobic, anaerobic, and microaerophilic organisms.

20x125mm tube, 15ml fill, 20/pk .....K219

## CT-SMAC for *E. coli* O157

For selection and differentiation of enterohemorrhagic *E. coli* O157. Reduces the rate of false positives found on regular MacConkey with Sorbitol plates. This new formulation, used by many public health laboratories, includes addition of cefixime and tellurite for greater selectivity of *E. coli* O157.

15x100mm plates, 18ml fill, 10/pk .....G129

## D/E Neutralizing Media

For neutralizing antiseptics and disinfectants, as well as to detect organisms remaining after treatment. This media is specially suited for environmental sampling where neutralization of the chemical is important in determining bactericidal activity.

15x100mm plate, 18ml fill, 10/pk ..... G224

16x125mm tube, 10ml fill, 20/pk .....K108

1L polycarbonate bottle, 750ml fill,  
10/pk .....U76

180ml polycarbonate wide mouth jar, 90ml fill,  
12/pk .....U75

473ml boston round bottle, 400ml fill,  
12/pk ..... U168

*Escherichia coli* (ATCC® 25922)

colonies growing on EMB Agar,

Levine, Cat. no. G25.

## Dichloran Rose Bengal Chloramphenicol (DRBC) Agar

Recommended for the enumeration of yeasts and molds in food and dietary supplements.

15x100mm plate, 18ml fill, 10/pk .....G389

## Dichloro Rose Bengal Chloram Agar (DRBCA)

For use in the cultivation of yeasts and molds associated with food, dietary supplements, and other matrices.

15x100mm plate, 26ml fill, 10/pk .....W89

## EC Medium

For the detection of fecal coliforms.

16x125mm tube with durham tube,  
10ml fill, 20/pk ..... K63

20x125mm tube with durham tube, 13ml fill,  
20/pk .....K13

Double Strength, 20x125mm tube with durham tube,  
10ml fill, 20/pk .....K14

## EC Medium with MUG

For the detection of *E. coli* in water and food samples by fluorogenic means. Read with a fluorescent lamp (long wave, 366nm).

20x125mm tube with durham tube,  
10ml fill, 20/pk .....K18

## Eosin Methylene Blue (EMB) Agar Levine

For use as a selective and differential medium for the isolation of Gram-negative bacilli (including coliform organisms and enteric pathogens).

15x100mm plate, 18ml fill, 10/pk .....G25



### Fraser Broth Base

For the cultivation of *Listeria* spp.

Fraser broth, 500gm .....CM895B

#### Tube

Fraser broth, modified,

16x125mm tube, 10ml fill, 20/pk.....K98

#### Bottle

500ml polycarbonate bottle, 225ml fill.

Each.....U57

10/pk .....U131

### Fluid Thioglycollate Medium, USP

For the cultivation of aerobic, microaerophilic, and anaerobic microorganisms.

#### Tube

20x125mm tube, 15ml fill, 20/pk..... K84

20x125mm tube, 10ml fill, 20/pk ..... K121

Fluid Thioglycollate with BE (Beef Extract),

16x125mm tube, 10ml fill, 20/pk..... K127

#### Bottles and Jar

60ml boston round glass bottle, 50ml fill, 24/pk.....U45

Fluid Thioglycollate without Indicator,

120ml boston round glass bottle, 100ml fill, 20/pk.....U43

180ml polycarbonate wide mouth jar, 100ml fill,

12/pk .....U41

200ml serum bottle, 125ml fill, 10/pk..... U207

500ml glass bottle, 400ml fill, 12/pk .....U272

### Hektoen Enteric (HE) Agar

For the selective isolation of pathogenic Gram-negative enteric bacteria, such as *Salmonella* spp. and *Shigella* spp.  
15x100mm plate, 18ml fill, 10/pk .....G63

15x100mm quad-plate,

5ml fill per section, 10/pk .....J415

### Inhibitory Mold Agar

Recommended for the selective isolation of fungi.

15x100mm plate, 26ml fill, 10/pk .....W25

50ml HardyFlask™, 12ml fill, 20/pk .....X20

20x125mm tube, 10ml fill, 20/pk.....L47

Inhibitory Mold Agar with Gentamicin,

15x100mm plate, 26ml fill, 10/pk .....W27

### KIA Medium

Kligler Iron Agar (KIA) is recommended for use in differentiating certain members of the *Enterobacteriaceae* by demonstrating hydrogen sulfide production and the fermentation of dextrose and lactose.

16x125mm tube, 8ml slant, 20/pk ..... L70

13x100mm tube, 4.5ml slant, 20/pk..... R70

### Lactobacilli MRS Agar

For the selective isolation and cultivation of *Lactobacillus* spp.

15x100mm plate, 18ml fill, 10/pk ..... G117

### Lactose Broth

For the detection of coliforms in food, dairy, and water; can also be used to pre-enrich samples for the recovery of *Salmonella* species.

#### Polycarbonate Bottle

500ml bottle, 225ml fill, 10/pk.....U145

500ml bottle, 500ml fill, 10/pk..... U245

#### Jar

180ml polycarbonate wide mouth jar, 90ml fill,

12/pk .....U136

180ml polycarbonate wide mouth jar, 99ml fill,

12/pk .....U92

350ml wide mouth glass jar, 225ml fill, 12/pk..... U146

*Staphylococcus aureus* (ATCC® 25923)  
colonies growing on HardyCHROM™  
Staph aureus, Cat. no. G311.



## Lactose Broth with Durham Tube

Used as a pre-enrichment medium for the cultivation of coliforms and *Salmonella* spp. in water, food, and dairy products.

Single Strength, 16x125mm tube, 10ml fill,  
20/pk..... K223

Double Strength, 16x125mm tube, 10ml fill,  
20/pk..... K137

## Lactose Broth with Lecithin and Tween® 80

For detecting coliforms in food, dairy, and water. It can also be used to pre-enrich samples for the recovery of *Salmonella* species.

1 liter polycarbonate bottle, 1,000ml fill,  
10/pk.....U317

500ml polycarbonate bottle, 500ml fill,  
10/pk..... U246



*Salmonella enterica* (ATCC® 14028) growing in Kligler Iron Agar, Cat. no. L70.

## Lauryl Tryptose Broth

For detecting coliform organisms in water, wastewater, and foods.

### Single Strength

20x125mm tube with durham tube,  
10ml fill, 20/pk ..... K33

16x125mm tube with durham tube,  
10ml fill, 20/pk ..... K61

### Double Strength

20x125mm tube with durham tube,  
10ml fill, 20/pk ..... K32

## Listeria Enrichment Broth, Modified

For the selective isolation of *Listeria* spp.  
500ml polycarbonate bottle, 225ml fill,  
10/pk.....U167

## Listeria Enrichment Broth

120ml boston round glass bottle, 99ml fill, 20/pk .....U93

## LPM Agar

Lithium Chloride Phenylethanol Moxlactam Plating Agar (LPM) for the selective isolation of *Listeria monocytogenes*.  
15x100mm plate, 10/pk .....G92

## Lysine Iron Agar, Modified

For use in differentiating certain members of the *Enterobacteriaceae*, especially *Salmonella* spp. by demonstrating hydrogen sulfide production and the decarboxylation or deamination of lysine.

15x100mm plate, 18ml fill, 10/pk .....G86

## MacConkey Agar

A selective and differential medium for the isolation of Gram-negative bacilli (including coliform organisms and enteric pathogens) on the basis of lactose fermentation.

15x100mm plate, 19ml fill, USP, 10/pk..... G603

16x125mm, 6.5ml slant, 20/pk ..... L30



### MacConkey Agar with MUG

For presumptive identification of *E. coli*.

15x100mm plate, 18ml fill, 10/pk .....G37

### MacConkey Agar with Sorbitol (SMAC)

A selective and differential medium for the detection of enterohemorrhagic *E. coli* O157.

15x100mm plate, 18ml fill, 10/pk .....G36

### Mannitol Yolk Polymyxin (MYP)

Mannitol Yolk Polymyxin (MYP) Agar is recommended for the enumeration, detection, and isolation of *Bacillus cereus* in food.

15x100mm plate, 18ml fill, 10/pk .....G147

### Mannitol Salt Agar

For the selective isolation and differentiation of *Staphylococcus* spp. based on high salt content and mannitol fermentation.

15x100mm plate, 18ml fill, USP, 10/pk.....G602

16x100mm tube, 6.5ml fill, 20/pk .....L32

### MIO Medium

Motility, Indole, Ornithine (MIO) for the detection of motility, indole production, and ornithine-decarboxylase activity of enteric bacilli.

16x100mm tube, 6.5ml deep, 20/pk..... Q20

13x100mm tube, 4ml deep, 20/pk..... R24

### Modified Posse Differential Medium + Rifampicin

For use as a selective and differential growth medium for the cultivation of Shiga toxin-producing *E. coli* (STEC).

15x100mm plate, 18ml fill, 10/pk .....G347

### Motility Test Medium

Motility Test Medium with and without Triphenyltetrazolium Chloride (TTC) is recommended for the detection of motility in Gram-negative enteric bacilli. TTC is added to enhance visualization of bacterial growth.

16x100mm tube, 8ml deep, 20/pk.....Q10

With TTC,

16x100mm tube, 8ml deep, 20/pk.....Q11

### MR-VP Broth

(Methyl Red and Voges-Proskauer) For identification of Gram-negative bacilli.

16x100mm tube, 2ml fill, 20/pk.....K237

16x100mm tube, 5ml fill, 20/pk.....K37

### Neomycin Anaerobic Blood Agar

(Blood Agar with 5% Sheep Blood, Hemin, Vitamin K, and Neomycin) For the selective isolation of anaerobic bacteria.

15x100mm plate, 17ml fill, 10/pk.....A62

### Nitrate Broth

For the detection of nitrate reduction and indole production (Indole Nitrate only) in bacteria. Contains a Durham tube for gas detection.

Indole Nitrate Broth, 16x100mm tube with Durham tube, 6ml fill, 20/pk..... K147

Nitrate Broth, 16x100mm tube with Durham tube, 6ml fill, 20/pk..... K42

### Nutrient Agar

15x100mm plate, 26ml fill, 10/pk .....W51

16x100mm tube, 5.5ml slant, 20/pk..... L20

### Novobiocin NaCl

For use with Shigella Broth Base in the selective enrichment of *Shigella* spp. in food samples.

16x100mm tube, 1000mg per tube, each ..... Z915A



Hardy Diagnostics also manufactures a complete line of Dehydrated Culture Media called CRITERION™.

## Orange Serum Agar

For cultivation and enumeration of aciduric, putrefactive microorganisms which include *Lactobacillus* spp., *Bacillus* spp., *Leuconostoc* spp., *Clostridium* spp., and yeast and molds in fruit juices and fruit juice concentrates, especially citrus fruits.  
15x100mm plate, 18ml fill, 10/pk .....G181

## Oxford, Medium, Modified

For selective isolation and differentiation of *Listeria monocytogenes*.  
15x100mm plate, 18ml fill, 10/pk ..... G46

## PALCAM Medium

For isolation and cultivation of *Listeria* species from foods.  
15x100mm plate, 19ml fill, 10/pk .....G149

## Phenol Red Broth with Dextrose

For the differentiation of microorganisms by carbohydrate fermentation. Contains a durham tube for gas detection.  
16x125mm tube with durham tube,  
10ml fill, 20/pk .....Y304

## Potato Dextrose Agar, USP

Potato Dextrose Agar (PDA) is recommended for use in the cultivation of yeasts and mold and for the inducement of sporulation.

### Plate

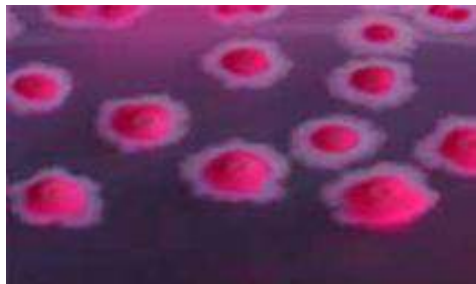
15x100mm plate, 26ml fill, 10/pk .....W60  
15x150mm plate, 68ml fill, 10/pk .....H51

### Tube

20x125mm tube, 10ml slant, 20/pk ..... L90  
20x125mm tube, 18ml deep, 20/pk ..... Q29

### Boston Round Glass Bottle

125ml glass bottle, 100ml fill, 20/pk .....U94  
250ml bottle, 200ml fill, 12/pk ..... U294  
473ml bottle, 400ml fill, 12/pk ..... U394



Violet Red Bile Agar, Cat. no. G78.



## Potato Dextrose Agar with TA (Tartaric Acid)

For the cultivation and enumeration of fungi.  
15x100mm plate, 28ml fill, 10/pk .....W96

## Rappaport-Vassiliadis (Broth), USP

Rappaport-Vassiliadis Broth is used in the detection and isolation of *Salmonella* spp. in food products.  
16x125mm tube, 10ml fill, 20/pk .....K246

## Rose Bengal Agar with Chloramphenicol

For selective isolation and enumeration of fungi.  
15x100mm plate, 24ml fill, 10/pk .....W87  
15x150mm plate, 72ml fill, 10/pk .....H35

## SabDex (Sabouraud Dextrose) Agar

For the cultivation of fungi and yeasts.

### Plate

15x100mm plate, Emmon's, 26ml fill, 10/pk .....W20  
15x100mm plate, 26ml fill, USP, 10/pk ..... W701  
15x150mm plate, 70ml fill, USP, 10/pk .....H39

### Tube

20x125mm pour tube, 18ml deep, USP,  
20/pk .....Q31  
20x125mm tube, 10ml slant, 20/pk ..... L40

### Bottles

473ml boston round glass bottle, 200ml fill, USP, 12/pk .....	U227
473ml boston round glass bottle, 400ml fill, USP, 12/pk .....	U352
500ml polycarbonate bottle, 200ml fill, USP, 10/pk .....	U270
500ml polycarbonate bottle, 400ml fill, 10/pk .....	U356
500ml polycarbonate bottle, 500ml fill, USP, 10/pk .....	U353

### SabDex Agar with Lecithin and Tween® 80

For isolation and cultivation of fungi, and the neutralization of disinfectants. Germicidal or disinfectant residue is neutralized by the addition of Lecithin and Tween® 80.

#### Plate

15x100mm plate, 26ml fill, 10/pk .....	W71
--	-----

#### Tube

20x125mm pour tube, 18ml deep, 20/pk .....	Q75
---	-----

#### Bottle

500ml polycarbonate bottle, 400ml fill, 10/pk .....	U175
473ml boston round glass bottle, 400ml fill, 12/pk .....	U431

### Selenite Cystine Broth

For the selective enrichment of *Salmonella* spp. Cystine enhances growth of *Salmonella* spp.  
16x125mm tube, 10ml fill, 20/pk..... K69

### SIM Medium

Sulfide-Indole-Motility (SIM), for identification of Gram-negative bacilli based on sulfide production, indole formation, and motility.  
16x100mm tube, 8ml deep fill, 20/pk..... Q30

### Simmons Citrate Agar

For the detection of citrate utilization of Gram-negative enteric bacilli.  
16x100mm tube, 10ml fill slant, 20/pk..... L80

### Standard Methods Agar

Plate Count Agar, for the cultivation and enumeration of microorganisms in dairy, food, and water.  
15x100mm plate, 18ml fill, 10/pk .....G43  
15x100mm plate, without label, 18ml fill,  
10/pk ..... G44  
473ml boston round glass bottle, 400ml fill,  
12/pk ..... U395  
20x125 pour tube, 18ml deep fill, 20/pk .....Q21  
120ml boston round glass bottle, 100ml fill, 20/pk.....U95  
250ml boston round glass bottle, 200ml fill, 12/pk.. U295

### Standard Methods Agar with BCP (Bromocresol Purple)

A non-selective medium recommended for the growth, enumeration and differentiation of acid-producing bacteria. This medium is recommended by the American Public Health Association (APHA) to recover sub-lethally injured lactobacilli from pasteurized dairy products.  
15x100mm plate, 18ml fill, 10/pk .....G143



SabDex (Sabouraud Dextrose) Agar, Cat. no. U35

## Sterile Deionized Water

Deionized water, for the preparation of dilutions and suspensions.

125ml polypropylene bottle, 100ml fill,  
12/pkg.....U85

## TCBS Agar

Thiosulfate Citrate Bile Sucrose, for selective isolation of pathogenic vibrios.

15x100mm plate, 18ml fill, 10/pkg.....G55

## Tetrathionate Broth Base

For selective enrichment of *Salmonella* spp.

Tetrathionate Broth Base, use with Iodine-Iodide Solution, Cat. no. Z129.

16x125mm tube, 10ml fill, 20/pkg.....K65

Polycarbonate bottle, 1,000ml fill,  
10/pkg.....U165

Iodine-Iodide Solution, 2oz glass bottle,  
50ml fill, each.....Z129

## Tetrathionate Broth with Brilliant Green

For the selective enrichment of *Salmonella* spp. Use with iodine-iodide solution, Cat. no. Z129.

16x125mm tube, 10ml fill, 20/pkg.....K164

## Tomato Juice Agar

16x125mm tube, 6.5ml slant, 20/pkg.....L92

15x100mm plate, 10/pkg.....G119

## Tryptic Soy Agar (TSA)

For general cultivation of microorganisms.

### Plate

15x100mm plate, 18ml fill, USP, 10/pkg.....G601

15x100mm plate, 18ml fill, 100/pkg.....G60BX

15x150mm plate, 69ml fill, USP, 10/pkg.....H19

15x100mm plate, without label, 23ml fill,  
10/pkg.....G62

TSA with Lecithin and Tween® 80,  
15x100mm plate, 20ml fill, 10/pkg.....G41

### Bottle

250ml boston round glass bottle, 150ml fill, USP,  
20/pkg.....U49

500ml polycarbonate bottle, 500ml fill, USP,  
10/pkg.....U361

TSA with Lecithin and Tween® 80,  
500ml polycarbonate bottle, 400ml fill, 10/pkg.....U174

### Tube

TSA with Lecithin and Tween® 80,  
20x125mm pour tube, 18ml deep,  
20/pkg.....Q13

TSA, 16x100mm tube, 6.5ml slant,  
20/pkg.....L60

TSA, 20x125mm pour tube, 18ml deep, USP,  
20/pkg.....Q58

*Aspergillus brasiliensis*, formerly *Aspergillus niger*, (ATCC® 16404)  
colonies growing on Rose Bengal Agar with Chloramphenicol, Cat. no. W87.

## Tryptic Soy Broth (TSB) Media

For cultivation of microorganisms.

### Bottle

60ml boston round glass bottle, 50ml fill, USP, 24/pk .....	U44
120ml boston round glass bottle, 100ml fill, USP, 20/pk .....	U42
250ml boston round glass bottle, 160ml fill, USP, 12/pk .....	U171
473ml boston round glass bottle, 400ml fill, USP, 12/pk .....	U242
500ml glass bottle, 500ml fill, USP, each.....	U62
100ml serum bottle with flip seal, unlabeled, 100ml fill, USP, 20/pk .....	U56
500ml polypropylene bottle, 500ml fill, USP, each.....	U65
1L polypropylene bottle, 1,000ml fill, USP, 10/pk .....	U67
Double strength, 4oz glass bottle, 25ml fill, USP 12/pk .....	U225
TSB with Lecithin and Tween® 80, USP Double Strength, 8oz glass boston round bottle, 100ml fill, 12/pk.....	U70
TSB with 0.1% Tween® 80, 473ml glass bottle, 400ml fill, 3/pk .....	U243
TSB with Lecithin and Tween® 80, 500ml polypropylene bottle, 500ml fill, 10/pk .....	U229

### Jar

180ml polycarbonate wide mouth jar, 90ml fill, 12/pk .....	U134
180ml polycarbonate wide mouth jar, 100ml fill, USP, 12/pk .....	U71
600ml polycarbonate wide mouth bottle, 225ml fill, USP, 10/pk .....	U80
180ml polycarbonate wide mouth jar, 25ml fill, USP, 12/pk .....	U223

180ml polycarbonate wide mouth jar, 90ml fill, USP, 12/pk .....	U133
--	------

Double strength, 180ml polycarbonate wide mouth jar, 50ml fill, USP, 12/pk.....	U205
--	------

TSB with Lecithin and Tween® 20, 180ml polycarbonate wide mouth jar, 100ml fill, 12/pk.....	U261
---	------

TSB 0.5% Lecithin, 4.0% Tween® 20, 180ml polycarbonate wide mouth jar, 90ml fill, 12/pk .....	U241
---	------

### Tube

13x100mm tube, 1ml fill, 20/pk .....	R36
13x100mm tube, 2ml fill, 20/pk .....	R31
13x100mm tube, 3ml fill, 20/pk .....	R41
13x100mm tube, 5ml fill, 20/pk .....	R30
16x100mm tube, 2ml fill, 20/pk .....	K131
16x100mm tube, 5ml fill, 20/pk .....	K89
16x100mm tube, 9ml fill, 20/pk .....	K88
16x125mm tube, 10ml fill, USP, 20/pk .....	K82
20x125mm tube, 15ml fill, USP, 20/pk .....	K83
TSB with Lecithin and Tween® 80, 20x125mm tube, 9ml fill, 20/pk.....	K134

## Tryptone Glucose Extract Agar

For cultivation and maintenance of bacteria.

15x100mm plate, 18ml fill, 10/pk .....	G115
--	------

## Triple Sugar Iron (TSI) Agar

For identification of Gram-negative bacilli.

13x100mm tube, 4ml slant, 20/pk .....	R32
16x125mm tube, 8ml slant, 20/pk .....	L50

*Escherichia coli* (ATCC® 25922) colonies  
growing on MacConkey Agar, Cat. no. G35.



## Tween® 80

180ml polycarbonate wide mouth jar, 5ml fill,  
each..... U11

## Universal Beer Agar (UBA)

For selective isolation and cultivation of  
microorganisms significant in the brewing industry.  
15x60mm plate, 18ml, 10/pk .....G82  
Universal Beer Agar with Cyclohexamide (actidione),  
15x60mm plate, 15ml fill, 10/pk.....G182

## UVM Broth

For selective cultivation of *Listeria monocytogenes*.  
20x125mm tube, 20ml fill, 20/pk ..... K136  
500 ml polypropylene bottle, 225ml fill,  
10/pk.....U153  
500 ml polypropylene bottle, 500ml fill,  
10/pk.....U51

## Violet Red Bile Agar

For the detection and enumeration of coliforms in food,  
water, and dairy products.  
15x100mm plate, 18ml fill, 10/pk .....G78  
8oz boston round glass bottle, 200ml fill,  
12/pk ..... U296

## Vogel and Johnson Agar

For selective isolation of coagulase-positive,  
mannitol-positive *Staphylococcus aureus*.  
15x100mm plate, 19ml fill, 10/pk .....G193



## XLD Agar, USP

Xylose Lysine Deoxycholate, for selective isolation of  
pathogenic enteric Gram-negative bacteria.  
15x100mm plate, 18ml fill, 10/pk .....G604

## XLT4 Agar

For selective isolation of non-typhi *Salmonella* spp.  
from environmental samples and food.  
15x100mm plate, 18ml fill, 10/pk .....G165

## Yeast and Mold Agar (YM)

For cultivation and enumeration of yeasts and molds.  
15x100mm plate, 18ml fill, 10/pk .....G01

*Shigella flexneri*  
(ATCC® 12022) colonies  
growing on XLD Agar,  
Cat. no. G65.





Biosart® 100  
Disposable  
Funnel  
System

Built in  
membrane  
and petri  
plate

# Membrane Filtration

## Biosart® 100 Monitors

Biosart® 100 Monitors have been specifically designed for the detection and enumeration of microorganisms in cosmetics, food, beverages, water, and other liquids. These sterile disposables, with an incorporated membrane filter and cellulose pad, are ready-to-use. After filtration, just remove the 100ml funnel to convert the Biosart® into a petri plate, eliminating the need for membrane manipulation. Culture media for wetting the pad are available in individually sterilized, convenient, plastic media ampoules. Biosart® 100 Monitors are ready-to-use filter units designed to be placed onto the base of a vacuum manifold, eliminating the cleaning and sterilization required of reusable funnels.

### Biosart® 100 Monitors, sterile-packaged, 100ml funnel

Description	Pore Size	Membrane filter color   grid color	Quantity	Cat. no.
Individually wrapped, packaged in 4 trays, 12 units per tray	0.45 µm	Cellulose Nitrate white   black	48/pk	164014706ACK
	0.45 µm	Cellulose Nitrate green   dark green	48/pk	164024706ACK
	0.45 µm	Cellulose Nitrate gray*   white	48/pk	164034706ACK
Packaged in 4 trays, 12 units per tray	0.45 µm high flow	Cellulose Nitrate white   black	48/pk	1640147H6K
	0.45 µm	Cellulose Nitrate white   black	48/pk	164014706K
	0.45 µm	Cellulose Nitrate green   dark green	48/pk	164024706K
	0.45 µm	Cellulose Nitrate gray*   white	48/pk	164034706K
	0.45 µm	Regenerated Cellulose white	48/pk	164044706K
Bulk, loosely packaged, no trays	0.45 µm high flow	Cellulose Nitrate white   black	48/pk	1640147H6VK
	0.45 µm	Cellulose Nitrate white   black	48/pk	164014706VK
	0.45 µm	Cellulose Nitrate gray*   white	48/pk	164034706VK

\* Gray membranes after wetting turn black

# Adaptability!



## Combisart® Filter Station (Manifold)

### Sterile, Vented, Individual and Multi-Branch Systems

The Sartorius Stedim Biotech Combisart® system enables you to select the optimal hardware and consumables for your needs in microbiological analysis quality assurance.

At the heart of the Combisart® system is a high-grade stainless steel manifold designed to accommodate all types of filter holders and funnels such as:

- Ready-to-use units like, Biosart® 100 Monitors, Glass Funnels, and 100ml Steel Funnels

Combisart® individual and multi-branch manifolds, made of high-grade stainless steel, to accommodate various funnel types. Funnels and frits sold separately.

Description	Funnel Capacity	Cat. no.
1-branch manifold	1 x 100ml	16844
3-branch manifold	3 x 100ml	16842
6-branch manifold	6 x 100ml	16843





### Ampoule Media for use with Biosart®

Each box of Biosart® 100 Nutrient Media contains 50 ampoules with sterile media, each with 2.5ml and a lot certificate. If stored under proper conditions (+4 °C), the culture media have a shelf life of 12 months (except for m Endo, KF Strep, Lauryl Sulfate, and Tergitol, which have a 9 month shelf life). Nutrient Media comply with regulations and recommendations: ISO standards, the American Standards for Water and Foods, mineral water regulations, and guidelines of the food and beverage industries.

**Nutrient Media, 2.5ml, individually, sterile-packaged in ampoules, 50/pk**

Determination of	Media Type	Cat. no.
Total count	R2A (acc. EP)	1640002RAK
Total count	TGE   Total Count	1640002TCK
Total count	Total Count TTC	1640002TZK
<i>E. coli</i> and coliforms	m Endo	1640002ENK
<i>E. coli</i> and coliforms	m FC	1640002MFK
<i>E. coli</i> and coliforms	Lauryl Sulfate   Teepol	1640002LSK
<i>E. coli</i> and coliforms	Tergitol TTC	1640002TTK
Enterococci	KF Strep   Azide	1640002KFK
<i>Pseudomonas aeruginosa</i>	Cetrimide	1640002CEK
Yeasts and molds	m Green yeast and mold   Schaufus Pottinger	1640002MGK
Yeasts and molds	m Green yeast and mold selective	1640002GSK
Yeasts and molds	Wort	1640002WZK
Yeasts and molds and bacteria	WL Nutrient   Wallerstein Nutrient	1640002WNK
Bacteria in fermentation processes	WL Differential   Wallerstein Differential	1640002WLK
Acid-tolerant microorganisms	Orange Serum	1640002OSK



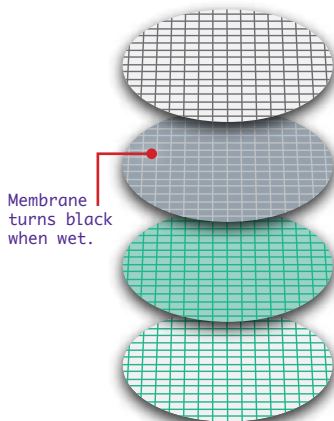


## Gridded Membrane Filters

Cellulose nitrate (cellulose ester) membrane filters are offered in a choice of three different colors to suit your specific test application and provide a high-contrast background. For simple evaluation of the results, the grid divides the filtration area into 130 squares, each measuring 3.1mm x 3.1mm. The membrane filters are individually packaged and sterilized and undergo stringent quality assurance testing. The certificate included in every package documents the quality assurance tests as well as the compliance of the 0.45 µm membrane filter with ISO 7704. The special pore structure of the new 0.45 µm HighFlow membrane filters allow shorter filtration times due to higher flow rates and throughputs. *E. coli* shows best growth promotion on High Flow membranes.

Individually wrapped, sterile packaged, 47mm, 100/pk

Filter Color / Grid	Pore Size	Cat. no.
White black	0.45 µm	1140647ACN
White black	0.45 µm High Flow	114H647ACN
Gray white	0.45 µm	1300647ACN
Green dark green	0.45 µm	1380647ACN
White green	0.45 µm	1390647ACN
White green	0.45 µm High Flow	139H647ACN



Membrane turns black when wet.

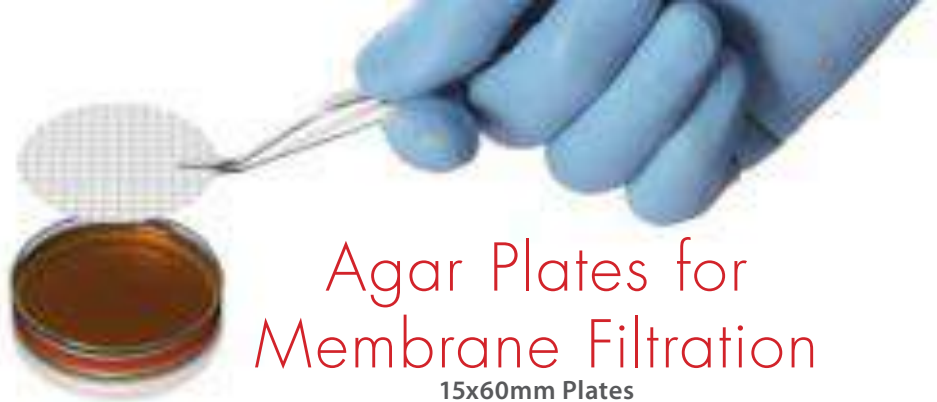
\*Suction for 1-3 stage manifolds only.



## Microsart® e.jet Transfer Pump\* with Quick Connection

The Microsart® e.jet is a new vacuum laboratory pump able to create sufficient vacuum for vacuum filtration and concomitantly transferring the filtered liquid directly to waste. This second generation of Microsart® e.jet is ideal for sample preparation in microbiology achieving a trans membrane pressure of 600 mbar and a higher flow rate of > 4.0 l/min (Normlitters water displacement by air in one minute). Constant flow rates and a defined maximum vacuum guarantee smooth and reliable filtration.

Microsart® e.jet Transfer Pump..... 166MP4  
Silicone Tubing with Quick Connection Coupling  
for vacuum-sided connection ..... 1ZA0006  
Silicone Tubing  
for pressure-sided connection..... 1ZAS0007



# Agar Plates for Membrane Filtration

15x60mm Plates

## A8 for Mycoplasma

For the selective isolation of *Mycoplasma hominis* and *Ureaplasma urealyticum*.

11ml fill, 10/pk.....G02

## Barney Miller Medium

For the cultivation of microorganisms significant in the brewing industry.

15ml fill, 10/pk.....G93

## Corn Meal Agar with Tween

For the cultivation of fungi. Induces chlamydospore formation by *Candida* spp.

13ml fill, 10/pk.....G101

## KF Streptococcus Agar

For the selective isolation and enumeration of fecal streptococci (including *Enterococcus*).

15ml fill, 10/pk.....G276

## Lactobacilli MRS Agar

For the isolation, enumeration, and cultivation of *Lactobacillus* spp.

12ml fill, 10/pk.....G197

## Lactobacilli MRS with Cyclohexamide

For the selective isolation and cultivation of *Lactobacillus* spp. in beer.

11ml fill, 10/pk.....G179

## mEI Agar

For the selective chromogenic detection and enumeration of *Enterococci* in water.

11ml fill, 10/pk.....G124

## m Endo LES Agar

For the enumeration of coliforms from water specimens.

11ml fill, 10/pk.....G128

## m FC with 1% Rosolic Acid

For the isolation and enumeration of fecal coliforms using membrane filtration, based on lactose fermentation.

12ml fill, 10/pk.....G126

## m HPC Agar

For the enumeration of heterotrophic organisms in water.

11ml fill, 10/pk.....G95

## m PA Agar

For the cultivation and enumeration of *Pseudomonas aeruginosa* in water.

11ml fill, 10/pk.....G133

## m-PA-C Agar

For the selective recovery and enumeration of *Pseudomonas aeruginosa* in water.

11ml fill, 10/pk.....G150

## Modified m TEC Agar

For selective chromogenic differentiation and enumeration of *Escherichia coli* in water.

10/pk.....G106

## Nutrient Agar with MUG

For the detection and enumeration of *E. coli* in water.

11ml fill, 10/pk.....G114

## Orange Serum Agar

For the cultivation and enumeration of aciduric bacteria and fungi.

11ml fill, 10/pk.....G91

## Potato Dextrose Agar

For the cultivation and enumeration.

13ml fill, 10/pk.....G94

### PPLO Selective Agar

For the selective isolation of pleuralopneumonia-like organisms, especially *Mycoplasma pneumoniae*.  
11ml fill, 10/pk..... G04

### PPLO Selective Agar, TAAP

PPLO Selective Agar plus thallium acetate, amphotericin B, and penicillin G to prevent bacterial overgrowth. 11ml fill, 10/pk ..... G248

### Pseudomonas Isolation

For the selective isolation of *Pseudomonas aeruginosa*. 11ml fill, 10/pk .....G145

### R2A Agar

For the detection of heterotrophic bacteria in water. 11ml fill, 10/pk.....G03

### Sabdex Agar with G & C

For the selective cultivation of fungi and dermatophytes. 12ml fill, 10/pk.....G159

### Skim Milk Agar

For the cultivation and differentiation of microorganisms based on proteolytic activity.  
11ml fill, 10/pk.....G138

### SP4 Agar with Arginine

For the selective cultivation and differentiation of *Mycoplasma* species based on the ability to utilize arginine.  
11ml fill, 10/pk.....G32

### SP4 Agar with Glucose

For the selective cultivation and differentiation of the mycoplasmas; including *Mycoplasma hominis*, *Mycoplasma pneumoniae*, and *Ureaplasma urealyticum*.  
11ml fill, 10/pk..... G21

### Standard Methods Agar

For the cultivation and enumeration of microorganisms in dairy products, food, and water.  
12ml fill, 10/pk .....G148

### Tryptic Soy Agar Plate

For use as a general growth medium for the isolation and cultivation of microorganisms.  
12ml fill, 10/pk .....G151

### Universal Beer Agar with Cyclohexamide

For the selective isolation and cultivation of microorganisms significant in the brewing industry.  
15ml fill, 10/pk .....G182

### WL Differential Medium

For the isolation of bacteria in brewing and fermentation processes. 10/pk.....G163

### WL Nutrient Agar with Gentamicin and Streptomycin

For the cultivation of yeast and mold in the fermentation process. 10/pk .....G191

### XLT-4 Agar

For the selective isolation of non-typhi *Salmonella* spp. 7ml fill, 10/pk..... G277



# Protective Gear

## ComfortPRO™ Disposable Lab Coats

These affordable, disposable lab coats are made of tri-laminated material. Fully breathable and splash resistant. Our lab coats feature snap front buttons, knit cuffs, and knit collars for added comfort. Three pockets are also featured, one on the breast and one at each hip. Your choice of color: white or blue. Available in five sizes.

### Blue, 30/case

Small .....	36103BS
Medium .....	36103BM
Large .....	36103BL
XLarge .....	36103BXL
XXLarge .....	36103BXXL

### White, 30/case

Small .....	36103WS
Medium .....	36103WM
Large .....	36103WL
XLarge .....	36103WXL
XXLarge .....	36103WXXL

## Lab Aprons

Personal protective apron made of 2-1/4 mm polyethylene, fluid proof, 43x59 inches, 20/case .....8571



Free samples of ComfortPRO™ Disposable Lab Coats are available for evaluation.

**Top  
Seller!**



PRECISION® Nitrile Gloves

## Gloves

Hardy Diagnostics offers an extensive line of laboratory gloves which meet the needs of most laboratories. Volume discounts are available.

### PRECISION® Nitrile Gloves (Powder Free)

Best all-around glove! Soft feel, powder-free, micro-textured, blue.

Extra Small, 10x100/box.....	PCS770
Small, 10x100/box.....	PCS772
Medium, 10x100/box .....	PCS775
Large, 10x100/box.....	PCS776
Extra Large, 10x90/box.....	PCS778



Splash Shield (full face), Cat. no. 4505

## Face Shields

### Splash Shield

Splash Shield Full Shield, 24 per box.....	4505
Splash Shield Short Shield, 24 per box.....	4511



# Pathogen Detection

## Bacillus-ID, Identification Panel, Microgen®

For the identification of mesophilic *Bacillus* species isolated from food materials and the environment. Helps in the identification of *Bacillus* and related species, particularly those involved in food poisoning and food spoilage. Substrates used are based on conventional methods and fully validated in scientific literature. Easy-to-use 24 reaction system, results in 48 hours. Results interpreted using new Microgen ID system software (registered users are entitled to free database updates).

20 tests..... MID66

## Campylobacter Latex Test

A rapid latex slide agglutination test for enteropathogenic *Campylobacter* spp. grown on selective media.

50 tests..... F46

## Coagulase Plasma

Lyophilized rabbit plasma, for identification of *Staphylococcus aureus* by using coagulase test.

6x3ml.....Z003

6x20ml .....Z020

## EcoliPRO™ O157 Latex Kit

For the identification of *E. coli* O157 from a colony of bacteria. So sensitive that it requires only one colony. Uses proprietary antibodies that eliminate the possibility of cross-reactions with *Escherichia hermanii* and other sorbitol-negative *Escherichia* species. Contains both positive and negative controls. Includes reaction cards and mixing sticks. Rapid results in just two minutes.

50 tests..... PL070HD

## EnteroPluri-Test

For the rapid identification of Gram-negative Enterobacteriaceae. Not for human diagnostic use.

25 test..... 215336

EnteroPluri-Test Cat. no 215336



## Listeria Identification Panel, Microgen®

A complete identification panel for identifying all *Listeria* spp. No additional materials required. Substrates included, conform to all international standards. Enhanced built-in hemolysis test, no blood plate required. Identifies *Listeria monocytogenes*.

20 tests..... MID67

Microgen® ID Software..... MID60

## Legionella Latex

A rapid latex slide agglutination test for identifying *Legionella pneumophila* grown on selective medium. Identifies *L. pneumophila* Serogroup 1 and Serogroup 2-15. Also contains group latex for 10 other pathogenic species. Suitable for food and water use.

50 tests.....M45

Salmonella Elisa Test Kit

**Listeria Latex**

Rapid slide latex test for the identification of motile *Listeria* spp. from solid selective media.  
50 tests..... F48

**Reveal® REVIVE Medium, Salmonella**

Salmonella test system provides for the rapid recovery of Salmonella in food and animal feed, allowing detection and presumptive identification of the test organism within 21 hours.  
Product Specifications:  
• Sensitivity: 1–5 CFU/25 g  
• Testing time: 15 min  
• Storage: 2–30°C  
• Approvals: AOAC-RI #960801  
500 grams for 68 samples  
Each..... 9708B



**Salmonella Latex**

A rapid latex slide agglutination test for the presumptive identification of *Salmonella* spp. in selective and/or enrichment cultures or isolates taken directly from selective agars.  
50 tests..... M42

**Salmonella Elisa Test Kit**

Accurate results in 48 Hours! This is by far the best *Salmonella* screening kit available today. Easy-to-use pipetting steps. Detects *Salmonella* spp. in food and feed at levels as low as 1 cfu/25 gram sample. AOAC approved, manual or automatic read-out.  
12 strips, 8 wells/row,  
96 tests..... CHB0081

**StaphTex™ Blue (for *Staph aureus*)**

Produces clear and reliable results when testing for *Staphylococcus aureus*. The plasma-coated blue latex beads create the easiest read-out ever! Positives rapidly agglutinate the blue beads on a white background, while negatives remain consistently smooth. The StaphTex™ Blue kit tests for both the Clumping Factor and Protein A found in *Staphylococcus aureus*. Liquid controls are included.  
50 tests..... ST50  
200 tests..... ST200



# Microbiologics®

## Control Organisms

For Microbiology Testing Process Quality Assurance

### EZ-FPC™

Lyophilized pellets of more commonly encountered food borne organisms. EZ-FPC™ are quantitative organism preparations used as food process controls for the verification of methodology and media quality. Each vial contains ten pellets of a single lyophilized microorganism at a specified concentration, detailed instructions, and a certificate of assay.



\*The ATCC Licensed Derivative Emblem, the ATCC Licensed Derivative word mark, and the ATCC catalog marks are trademarks of ATCC. Microbiologics® Inc. is licensed to use these trademarks and to sell products derived from ATCC® cultures.

Cat. no.	Description (vials of 10 pellets)	Ref. no.*
0265FPC	<i>Alicyclobacillus acidoterrestris</i>	49025**
0260FPC	<i>Arthrobacter psychrolactophilus</i>	700733**
0392FPC	<i>Aspergillus brasiliensis</i>	16404**
0998FPC	<i>Bacillus cereus</i>	10876**
0674FPC	<i>Clostridium perfringens</i>	12919**
0756FPC	<i>Cronobacter muytjensii</i>	51329**
0306FPC	<i>Enterobacter aerogenes</i>	13048**
0497FPC	<i>Enterococcus faecalis</i>	7080**
0617FPC	<i>Escherichia coli</i> O157	35150**
0795FPC	<i>Escherichia coli</i>	43888**
0791FPC	<i>Escherichia coli</i>	51813**
0813FPC	<i>Lactobacillus fermentum</i>	9338**
0989FPC	<i>Lactobacillus rhamnosus</i>	9595**
0814FPC	<i>Listeria innocua</i>	33090**
0687FPC	<i>Listeria monocytogenes</i>	19115**
0254FPC	<i>Listeria monocytogenes</i> Cornell University	SLR 2249
0794FPC	<i>Penicillium aurantiogriseum</i>	16025**
0693FPC	<i>Pseudomonas aeruginosa</i>	15442**
0698FPC	<i>Saccharomyces kudriavzevii</i>	2601**
0595FPC	<i>Salmonella bongori</i>	43975**
0817FPC	<i>Salmonella enterica</i> subsp. <i>enterica</i> serovar Abaetetuba	35640**
0360FPC	<i>Staphylococcus aureus</i> subsp. <i>aureus</i>	25923**
0485FPC	<i>Staphylococcus aureus</i> subsp. <i>aureus</i>	6538**
0803FPC	<i>Zygosaccharomyces rouxii</i>	28253**



## Dehydrated Culture Media

Hardy Diagnostics' dehydrated culture media, CRITERION™, is formulated to meet or exceed the highest quality standards. Choose from 250 standard formulas or request custom blending to your specifications. The innovative packaging designs and overall reliability make CRITERION™ the logical choice for culture media in your laboratory.

Product (Numbers indicate supplements are needed)	2L Mylar® Zip-Bag*	500gm Bottle	2kg Bucket	10kg Bucket
A-1 Medium	C7570	C7571	C7572	C7573
Bacillus Cereus Agar Base <sup>1,2</sup>	C5060	C5061	C5062	C5063
Baird-Parker Agar Base <sup>3</sup>	C5080	C5081	C5082	C5083
Bismuth Sulfite Agar	C5210	C5211	C5212	C5213
Brilliant Green Agar	C5240	C5241	C5242	C5243
Brilliant Green Agar, Modified	C8690	C8691	C8692	C8693
Brilliant Green Bile Broth	C5250	C5251	C5252	C5253
Brilliant Green Bile Broth with MUG	C5280	C5281	C5282	C5283
Buffered Listeria Enrichment Broth Base <sup>10</sup>	C7800	C7801	C7802	C7803
Buffered Peptone Water	C5320	C5321	C5322	C5323
Buffered Peptone Water (Modified)	C6350	C6351	C6352	C6353
Campylobacter Agar Base <sup>4</sup>	C5330	C5331	C5332	C5333
Cetrimide Selective Agar Base <sup>7</sup>	C5370	C5371	C5372	C5373
CLED Agar	C5400	C5401	C5402	C5403
Corn Meal Agar	C5490	C5491	C5492	C5493
D/E Neutralizing Agar, Modified	C5520	C5521	C5522	C5523
D/E Neutralizing Broth	C7370	C7371	C7372	C7373
Dextrose Tryptone Agar	C5620	C5621	C5622	C5623
EC Medium	C5690	C5691	C5692	C5693
EC Medium Base <sup>5</sup> , Modified	C8090	C8091	C8092	C8093
EC Medium with MUG	C5680	C5681	C5682	C5683
Half Fraser Broth Base	C8040	C8041	C8042	C8043
Hektoen Enteric (HE) Agar	C5840	C5841	C5842	C5843
Kligler Iron Agar	C5910	C5911	C5912	C5913
Lactobacilli MRS Broth	C5930	C5931	C5932	C5933
Lactobacillus Selective Agar Base	C6050	C6051	C6052	C6053
Lactose	C5950	C5951	C5952	C5953
Lactose Broth	C5940	C5941	C5942	C5943
Lauryl Tryptose Broth	C5980	C5981	C5982	C5983
Lauryl Tryptose Broth with MUG	C5990	C5991	C5992	C5993
Lethen Agar	C7360	C7361	C7362	C7363
Lethen Agar, Modified	C7900	C7901	C7902	C7903
Lethen Broth	C6020	C6021	C6022	C6023



Product (Numbers indicate supplements are needed)	2L Mylar® Zip-Bag <sup>+</sup>	500gm Bottle	2kg Bucket	10kg Bucket
Lethen Broth Modified	C7640	C7641	C7642	C7643
Listeria Enrichment Broth	C6030	C6031	C6032	C6033
Listeria Enrichment Broth, Modified	C6360	C6361	C6362	C6363
LBS (Lactobacillus Select) Agar Base	C6050	C6051	C6052	C6053
m FC Agar Base	C6270	C6271	C6272	C6273
m FC Broth Base	C8220	C8221	C8222	C8223
m Green Yeast and Fungi Broth	C7540	C7541	C7542	C7543
m PA Agar Base	C7950	C7951	C7952	C7953
m PA-C Agar	C7960	C7961	C7962	C7963
mTEC Agar	C7740	C7741	C7742	C7743
Modified Plate Count Agar	C8190	C8191	C8192	C8193
Nutrient Agar	C6460	C6461	C6462	C6463
Orange Serum Agar	C7510	C7511	C7512	C7513
Oxford Listeria Agar Base	C6520	C6521	C6522	C6523
Pancreatic Digest of Casein (Casein Peptone)	C6530	C6531	C6532	C6533
Plate Count Agar, Modified	C8190	C8191	C8192	C8193
Potato Dextrose Agar (PDA)	C6620	C6621	C6622	C6623
Presence-Absence Broth	C6630	C6631	C6632	C6633
R2A Agar	C6720	C6721	C6722	C6723
SabDex with Lecithin and Tween®	C6800	C6801	C6802	C6803
Selenite Cystine Broth	C6920	C6921	C6922	C6923
Shigella Broth Base	C9150	C9151	C9152	C9153
Standard Methods Agar	C6980	C6981	C6982	C6983
TAT Broth Base <sup>6</sup>	C7030	C7031	C7032	C7033
Tetrathionate Broth Base <sup>8</sup>	C7060	C7061	C7062	C7063
Triple Sugar Iron (TSI) Agar	C7110	C7111	C7112	C7113
Tryptic Soy Agar (TSA)	C7120	C7121	C7122	C7123
Tryptic Soy Agar with Lecithin and Tween®	C7130	C7131	C7132	C7133
Tryptic Soy Broth (TSB)	C7140	C7141	C7142	C7143
Universal PreEnrichment Broth	C7220	C7221	C7222	C7223
UVM Modified Listeria Enrichment Broth	C7240	C7241	C7242	C7243
Violet Red Bile Agar (VRBA)	C7260	C7261	C7262	C7263
Violet Red Bile Agar with MUG	C7250	C7251	C7252	C7253
WL Differential Medium	C7290	C7291	C7292	C7293
WL Nutrient Medium	C7300	C7301	C7302	C7303
XLD Agar	C7320	C7321	C7322	C7323
XLT4 Agar Base <sup>9</sup>	C8030	C8031	C8032	C8033

## Supplements and Antibiotics

	Product	Quantity	Cat. no.
1	Egg Yolk Suspension	1x100ml	R450290
2	Bacillus Cereus Selective Supplement Polymyxin B	10x50,000IU/vial	SR099E
3	Egg Yolk Tellurite Emulsion, 100%	1x100ml	R450330
4	Campylobacter Selective Supplement (Karmali)	10 vials - 2 vials/L of medium	SR167E
5	Sodium Novobiocin	10 x 10mg	SR181E
6	Tween® 20	1x40ml	PS20
7	Glycerol	100gm	228210
8	Tetrathionate Supplement	50ml	Z129
9	XLT4 Supplement Tergitol 4	100ml vial	235310
10	Buffered Listeria Enrichment Broth Supplement	10 vials - 1 vial per 2.25 liters	SR0149A

+ Mylar® Zip-bags contain a pre-weighed amount of blended powder, sufficient to prepare two liters of finished product (after water is added) unless noted by an asterisk\*\*\*.

Tween® is a registered trademark of ICI Americas, Inc.



# Lab Supplies

## 250ml Graduated Filtering Flask, Heavy Wall Glass, Tubulation

These filtering flasks feature heavy-duty rims to reduce chipping, white, permanent graduations, and large marking squares. Made from high-quality borosilicate tubing with a low coefficient of expansion. Borosilicate tubing also provides uniform wall thickness resulting in the optimum balance between thermal shock resistance and mechanical strength.

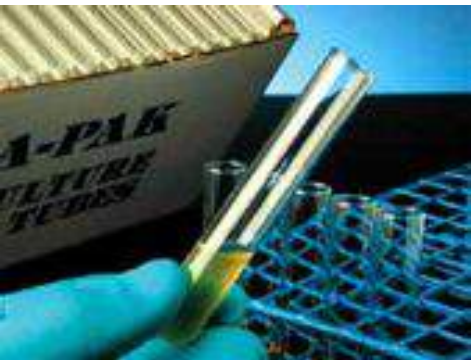
- Capacity - 250 mL
  - Graduation Range - 75 to 250ml
  - Graduation Interval - 25ml
  - Approx. O.D. x Height - 86 x 160mm
- 6/pk ..... 20074250



## SporAmpule® Liquid Biological Indicator

An error-free BI (Biological Indicator) system certified for use with steam sterilization processes. After processing in a normal load, the SporAmpule® is incubated at 56°C for 48 hours. A purple to yellow color change and visible turbidity of a processed SporAmpule® indicates sterilizer failure.

- 20/pk ..... BST20  
100/pk ..... BST100



## Test Tube, Flint Glass

These tubes are chemically clean and well suited for general use in blood banks, hematology, chemistry, and all areas of the laboratory. Manufactured in compliance with strict specifications, their consistent size and weight with properly rounded bottoms make the 10 x75mm and 12x75mm tubes ideally suited for use in cell washers.

- 10x75mm, 1000/bx ..... M10  
12x75mm, 1000/bx ..... M12  
13x100mm, 1000/bx ..... M13  
16x75mm, 1000/bx ..... M190  
16x100mm, 1000/bx ..... M16  
16x125mm, 1000/bx ..... M165  
16x150mm, 1000/bx ..... M166

## Critical Step® Tacky Mats Multi-Layer Floor Mat

Adhesive-coated contamination control mats capture particulates from foot traffic and equipment wheels, preventing debris from hitchhiking into the cleanroom or controlled environment. Adhesive is non-transferable and contains a non-leeching, nontoxic antimicrobial agent that provides long-lasting protection against growth of mold, mildew, fungi, and algae. Numbered corner tabs ensure one-at-a-time sheet removal. Suitable for use in nuclear, pharmaceutical, food processing, hospital, electronics, agriculture, laser/optics, biotechnology, computers, industrial, semiconductor, and defense applications.

- 18" x 46", white, 30-layer mats,  
8/case ..... 21924118





**HARDY**  
**DIAGNOSTICS**  
*A Culture of Service™*

1430 West McCoy Lane  
Santa Maria, CA 93455

