



# HardyCHROM™



**HARDY**  
DIAGNOSTICS  
A Culture of Service™



Online Ordering Available

# HardyCHROM™

## Table of Contents

1	BlueEcoli	9	O157
2	Candida	10	Sakazakii
3	CRE	11	Salmonella
4	ECC	12	SS
5	HurBi	13	Staph aureus
6	ESBL	14	UTI
7	Listeria	15	Vibrio
8	MRSA		



### Headquarters

1430 West McCoy Lane  
Santa Maria, CA 93455  
800.266.2222 : phone  
805.346.2760 : fax  
Sales@HardyDiagnostics.com  
www.HardyDiagnostics.com

### Distribution Centers

Santa Maria, California  
Olympia, Washington  
Salt Lake City, Utah  
Phoenix, Arizona  
Dallas, Texas  
Springboro, Ohio  
Lake City, Florida  
Albany, New York  
Raleigh, North Carolina



ISO 13485  
FM 572526

The Quality Management System at  
the Hardy Diagnostics manufacturing  
facility is certified to ISO 13485.

Copyright © 2014 Hardy Diagnostics



# HardyCHROM™

## BluEcoli™

### Easy *E. coli* Identification for UTIs!

HardyCHROM BluEcoli™ is a revolutionary agar plate for economically screening urine specimens for *E. coli*.

Inoculate both sides of this biplate with the urine specimen. If the infecting organism is *E. coli*, the colonies on the chromogenic side of the biplate will turn blue.<sup>1</sup>

Since 80-90% of all positive urine cultures are *E. coli*, the BluEcoli™ Urine Biplate is a fast, easy, and cost-effective way of identifying the majority of your urine culture workload.<sup>2</sup>

- The blue color is confirmatory for *E. coli*. No further confirmation or indole testing is required.<sup>3</sup>
- Save time and money by not using an expensive identification system.
- Select a colony from the blood agar side of the biplate for susceptibility testing.

#### Ordering Information

15x100mm biplate  
BluEcoli™/Blood Agar, 10/pk.....J123

15x100mm biplate  
BluEcoli™/CNA, 10/pk.....J116



Online Ordering Available

<sup>1</sup> Colonies of the serotype *E. coli* O157, which are not usually associated with urinary tract infections, are an exception and will not turn blue on the chromogenic side of the BluEcoli™ Urine Biplate.

<sup>2</sup> Kodaka et al., *Journal of Clinical Microbiology*, Jan. 1995, p.199-201.

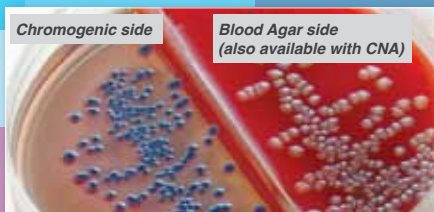
<sup>3</sup> The performance of a spot indole test alone is not an adequate screen for *E. coli*, since there are at least 52 species of Gram-negative bacilli that grow on MacConkey, are indole-positive, and ferment lactose.



*Escherichia coli*



*Klebsiella pneumoniae*



Chromogenic side

Blood Agar side  
(also available with CNA)

BluEcoli™ Urine Biplate inoculated with a pure *E. coli* culture.

# Candida

**Best Seller!**

## *Candida Speciation Made Easy!*

HardyCHROM™ Candida is a selective and differential culture medium that facilitates the isolation and differentiation of clinically important yeast species.

- Useful in detecting mixed yeast infections
- Inhibits the majority of bacterial species

### Ordering Information

15x100mm plate, 10/pk.....G301



Online Ordering Available



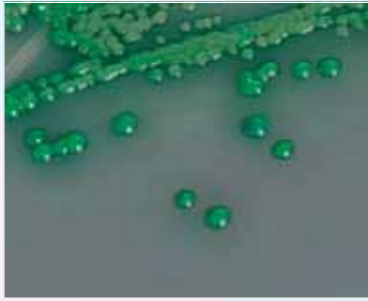
*C. glabrata* colonies



*C. tropicalis* colonies



*C. krusei* colonies

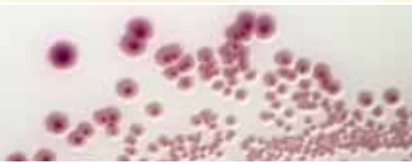


*C. albicans* colonies

# HardyCHROM™ CRE

## Fast screening for CRE's!

HardyCHROM™ CRE is used as a primary screening medium for the simultaneous detection and differentiation of Gram-negative bacteria that produce carbapenemase. It can be used as a cost-effective screening method.



*E. coli* produces colonies that are rose to magenta in color with darker pink centers.



*Pseudomonas* spp. produce colorless to light yellow-green, translucent colonies which may have a slight iridescence with crinkled edges.

*"HardyCHROM" CRE is not intended to diagnose CRE infection nor to guide or monitor therapy for CRE infections. Further testing using approved methods is necessary for identification, susceptibility testing, or epidemiological typing.*

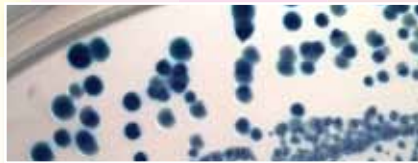


Online Ordering Available

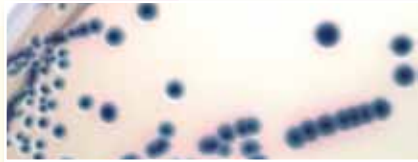
The ability to quickly screen for carbapenemase-producing bacteria aids in implementing effective infection control within the hospital environment.

### Ordering Information

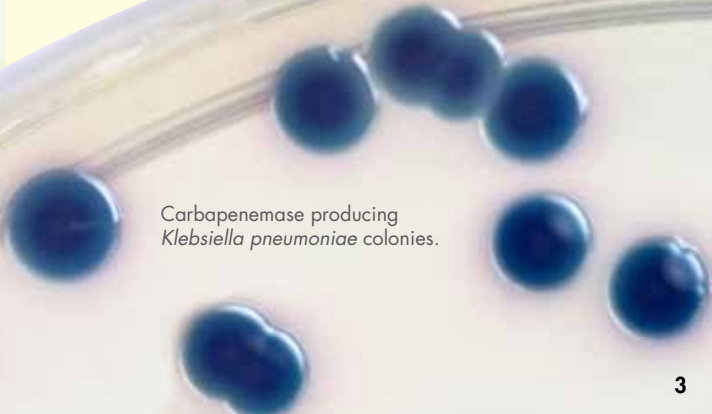
15x100mm plate, 10/pk.....G323



*Klebsiella*, *Enterobacter*, and *Serratia* spp. produce large, dark blue colonies.



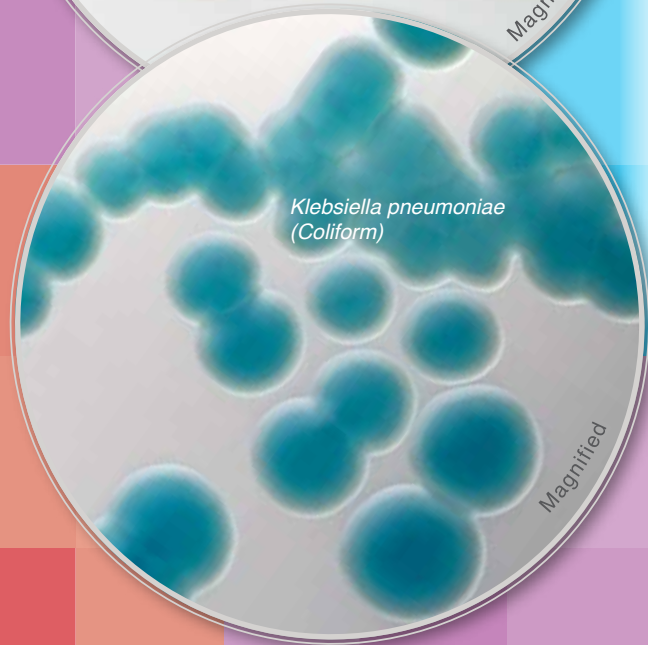
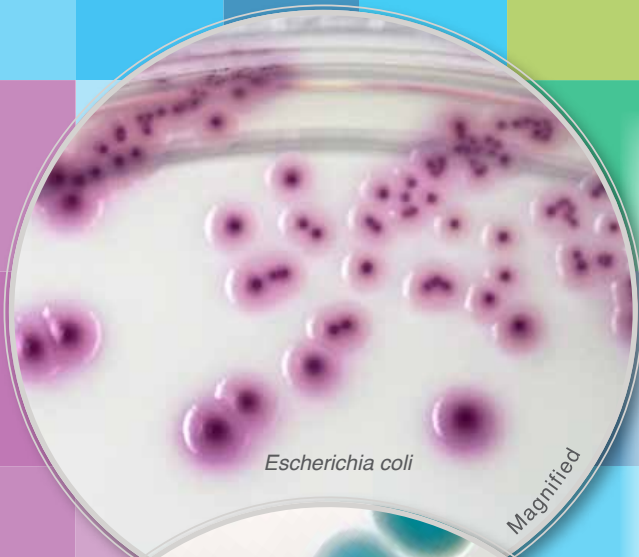
*Citrobacter* spp. produce dark blue colonies, often with a rose halo in the surrounding media.



Carbapenemase producing  
*Klebsiella pneumoniae* colonies.

# HardyCHROM™ ECC

## for *E. coli* - Coliforms



HardyCHROM™ ECC (*E. coli*-Coliforms) is a chromogenic medium recommended for the detection, differentiation, and enumeration of *Escherichia coli* and other coliforms in food, beverage, or water samples based on colony color.

*E. coli* can be identified as pink to violet-colored colonies on the plate, while coliform bacteria will appear as turquoise colonies. Organisms other than coliforms or *E. coli* (including approximately 4% of *E. coli* strains and most O157 strains) will appear as white or colorless colonies.

### Ordering Information

HardyCHROM™ ECC,  
15x100mm plate, 10/pk.....G303

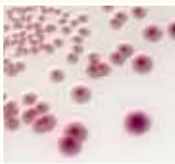
HardyCHROM™ ECC, contact plate for  
environmental surface sampling,  
15x60mm, 10/pk.....P17



Online Ordering Available

# HardyCHROM™ HUrBi™

## Gram Positive Side



*Escherichia coli*



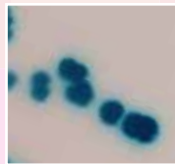
*Staphylococcus aureus*



*Pseudomonas aeruginosa*



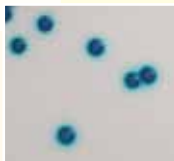
*Citrobacter freundii*



*Klebsiella pneumoniae*



*Staphylococcus saprophyticus*



*Enterococcus* spp.



*Proteus mirabilis*



*Candida albicans*

## Gram Negative Side

HUrBi™ (HardyCHROM™ Urine Biplate) is formulated to isolate Gram-positive organisms and yeast on the left side of the biplate and Gram-negative organisms on the right side of the biplate. Chromogenic substrates in the media react with different microorganisms to produce specific color reactions for easy identification.

## Ask for free evaluation samples!



Online Ordering Available

## Saves Money

Reduce the need for expensive automated ID cards.

## Easy Read-Out

Distinct color reactions for each of the common urinary tract pathogens make it easier to detect mixed infections.

## Confirmatory

Identify *E. coli* and *Enterococcus* spp. with no further testing needed.

## Ordering Information

HUrBi™, 100mm Biplate, 10 plates/pack... J100

### Gram-Positive Side

<i>Staphylococcus aureus</i>	white, smooth
<i>Staphylococcus saprophyticus</i>	pink
<i>Enterococcus</i>	blue
<i>Candida</i>	white, matte

### Gram-Negative Side

<i>Proteus/Morganella/Providencia</i>	golden yellow
<i>Escherichia coli</i>	magenta
KES Group ( <i>Klebsiella</i> , <i>Enterobacter</i> , <i>Serratia</i> )	blue
<i>Pseudomonas</i>	yellow-green

# HardyCHROM™ ESBL

HardyCHROM™ ESBL is a selective chromogenic medium recommended for the primary screening and differentiation of Extended-Spectrum Beta-Lactamase (ESBL) producing *Enterobacteriaceae*.

- Results in as little as 24 hours
- Easy-to-read color read-out

*\*HardyCHROM™ ESBL is not intended to diagnose ESBL infection nor to guide or monitor therapy for ESBL infections. Further testing using approved methods is necessary for identification, susceptibility testing, or epidemiological typing.*

## Ordering Information

15x100mm plate, 10/pk.....G321



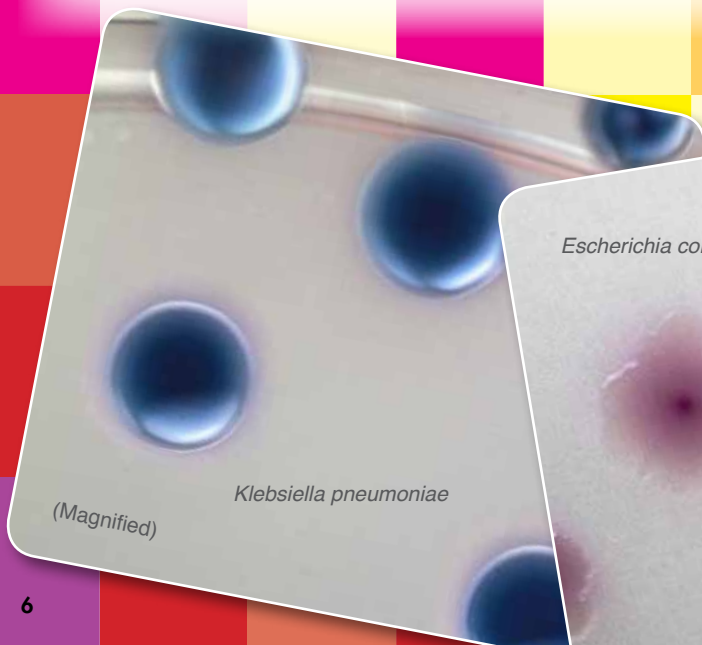
Online Ordering Available



*Proteus and Morganella spp.*



*Citrobacter spp.*



(Magnified)

*Klebsiella pneumoniae*



(Magnified)

*Escherichia coli*

# HardyCHROM™

**Distinct read-out in 24  
to 48 hours!**

## Listeria

HardyCHROM™ Listeria is a chromogenic medium recommended for the selective isolation, differentiation, and enumeration of *Listeria monocytogenes* from food and environmental samples.

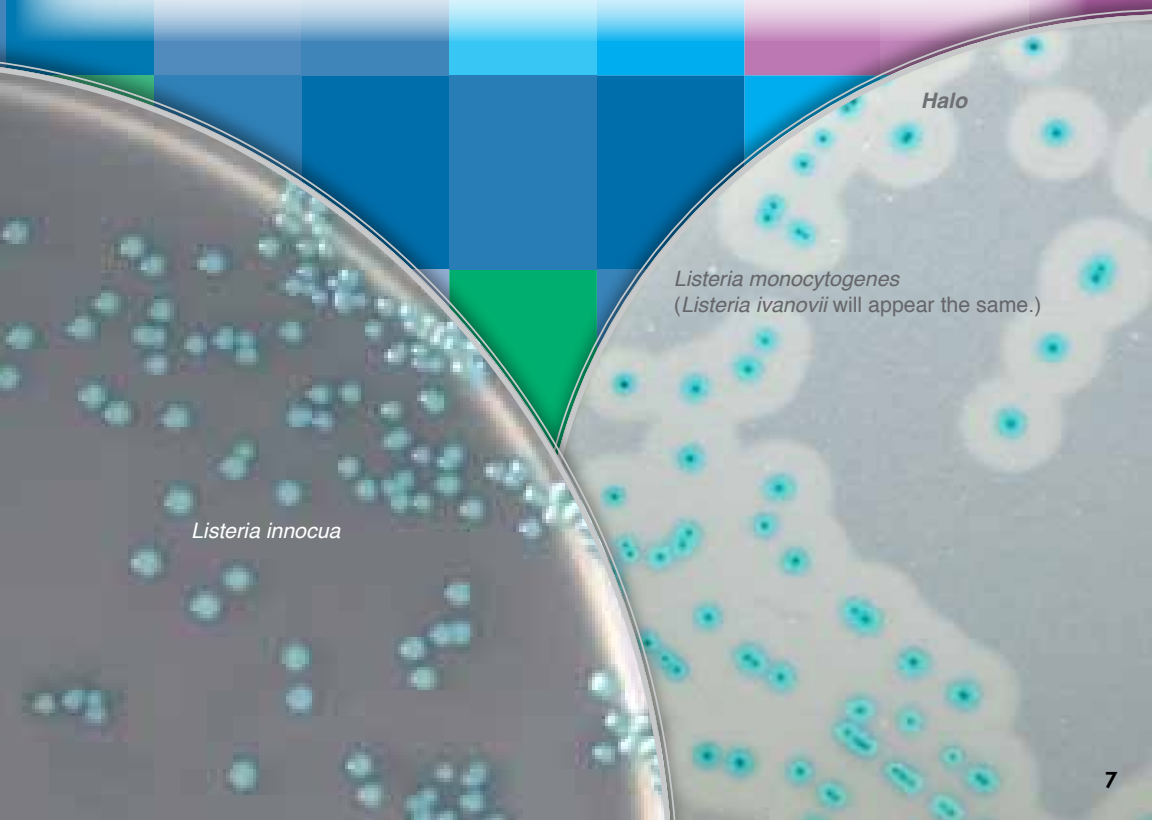
**Ordering Information**  
15x100mm plate, 10/pk.....G317



Online Ordering Available

- All *Listeria* species will produce turquoise colonies.
- *Listeria monocytogenes* and *Listeria ivanovii* will turn turquoise and have white opaque halos.

**Further tests are needed to definitively differentiate between these two species.**



*Listeria innocua*

Halo

*Listeria monocytogenes*  
(*Listeria ivanovii* will appear the same.)

# HardyCHROM™ MRSA

*Bright color development within 24 hours!*

HardyCHROM™ MRSA is a selective and differential chromogenic medium recommended for the detection of nasal colonization by methicillin-resistant *Staphylococcus aureus* (MRSA).\*

Selective agents will inhibit non-MRSA organisms, yeast, and most other Gram-positive cocci.

- Read-out at 24 hours.
- Distinct color change read-out
- Bright color development
- Economical pricing - call for a price comparison!
- Compatible with automation



Online Ordering Available

## Ordering Information

15x100mm plate, 10/pk.....G307  
15x100mm plate, 100/bx.....G307BX  
15x100mm plate (reduced stacking ring for use with auto inoculators), 10/pk.....GA307

HardyCHROM MRSA/HardyCHROM *Staph. aureus* Biplate,

15x100mm, 10/pk.....J35

MRSA Latex Test for PBP2'

50 tests.....DR900A

Contact Plate for Environmental Monitoring

15x60mm, 10/pk.....P14

Methicillin-resistant *Staphylococcus aureus* colonies grown aerobically for 24 hours.

\*HardyCHROM™ MRSA is not intended to diagnose MRSA infection nor to guide or monitor therapy for MRSA infections. Further testing using approved methods is necessary for susceptibility testing or epidemiological typing.

# HardyCHROM™ O157

**Highly selective... results in 24 hours!**

HardyCHROM™ O157 is a selective and differential medium recommended for the isolation of *E. coli* O157 from food and environmental sources. Chromogenic substances in the medium facilitate detection by colony color. Not intended for human diagnostic use.


- HardyCHROM™ O157 provides an initial screen intended to isolate colonies for further testing.
- Confirm isolated purple-pink colonies with a latex agglutination test (Cat. no. PL070HD), antisera (Cat. no. 295798), or other test methods for complete identification.
- Testing for the H7 antigen (Cat. no. 221591, 3ml or Cat. no. 295569, 5ml) or verotoxin testing may also be required.

## Ordering Information

15x100mm plate, 10/pk.....G305



Online Ordering Available

A photograph of a petri dish containing a bacterial culture. Numerous small, circular, pinkish-purple colonies are visible on the surface of the agar. The colonies are smooth and have a slightly raised appearance. The background of the agar is a light, off-white color.

*E. coli* O157 produces smooth, pink to mauve colonies. Organisms other than *E. coli* O157 will be inhibited or appear as blue colonies.

# HardyCHROM™

## Sakazakii

*Provides assurance of product purity!*

HardyCHROM™ Sakazakii is a chromogenic medium recommended for the selective isolation and differentiation of *Cronobacter* (*Enterobacter*) *sakazakii* from other members of the *Enterobacteriaceae* family based on colony color.

- *Cronobacter sakazakii* produces smooth, turquoise colonies.
- Other members of the *Enterobacteriaceae* family will produce white or colorless colonies with or without black centers.
- Most Gram-positive bacteria and yeast will be inhibited on this medium.

### Ordering Information

15x100mm plate, 10/pk.....G315



Online Ordering Available



*Cronobacter sakazakii*

# HardyCHROM™

# Salmonella

## Easy detection of Salmonella!

HardyCHROM™ Salmonella is a chromogenic medium recommended for the selective isolation and differentiation of *Salmonella* spp. from other members of the *Enterobacteriaceae* family based on colony color.

Selective agents inhibit the growth of Gram-positive organisms.

*Salmonella* species will produce deep pink to magenta-colored colonies. Bacteria other than *Salmonella* spp. may produce blue or clear colonies.

### Ordering Information

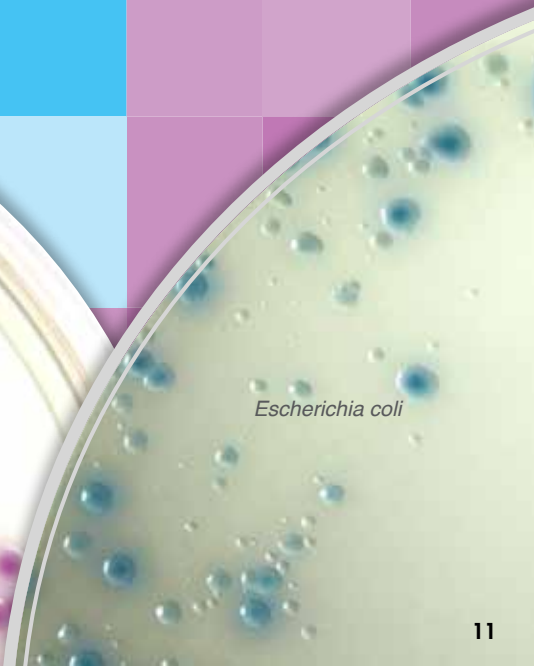
15x100mm plate, 10/pk.....G309



Online Ordering Available



*Salmonella enterica*



*Escherichia coli*

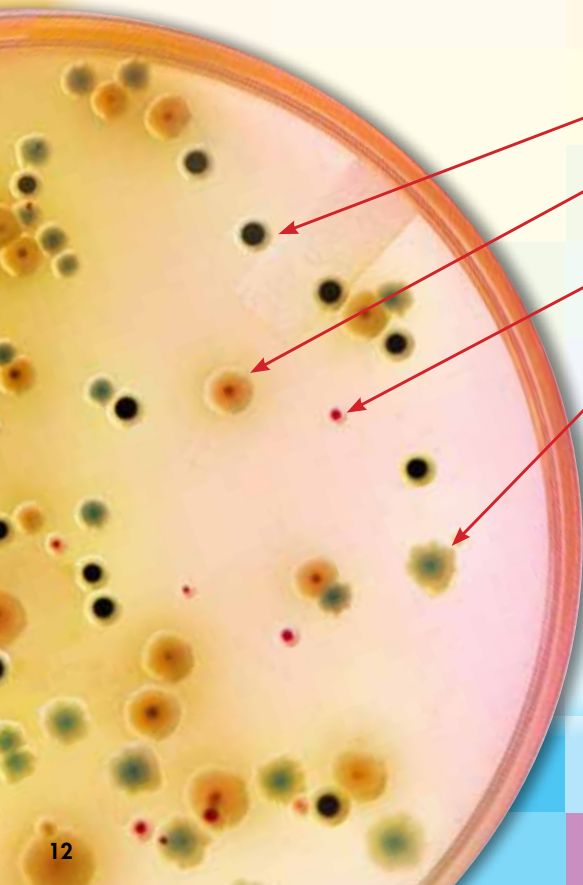
# HardyCHROM™ SS

## *Easily rule out false positives!*

HardyCHROM™ SS is a highly selective chromogenic medium for the primary screening of stool for the isolation and differentiation of ***Salmonella*** and ***Shigella*** spp. Non-pathogenic organisms are easily ruled out based on colony color or inhibition. Save time and money by not working up false positives.

### Features and Benefits

- Effectively rules out most *Proteus* spp. and other non-pathogenic non-lactose fermentors
- Requires less colony picking, sub-culturing, and identification
- Reduces the number of plates for primary stool setup
- Reduces labor and material costs by up to 20%



*Salmonella enterica* showing colonies with large black centers with a clear perimeter.

*Proteus mirabilis* showing pale pink or tan colonies with small light to dark brown centers at 24 hours

*Escherichia coli* showing pink to violet-colored colonies.

*Shigella sonnei* showing teal-colored colonies. Non-H<sub>2</sub>S producing Salmonellas will look the same.

HardyCHROM™ SS  
15x100mm plate, 10/pk.....G327



Online Ordering Available

# HardyCHROM™

# Staph aureus

## Bright color development!

HardyCHROM™ *Staph aureus* allows for the rapid and reliable detection of *Staphylococcus aureus*. This medium contains a special chromogenic mix that allows for the isolation and differentiation of *Staphylococcus* spp.

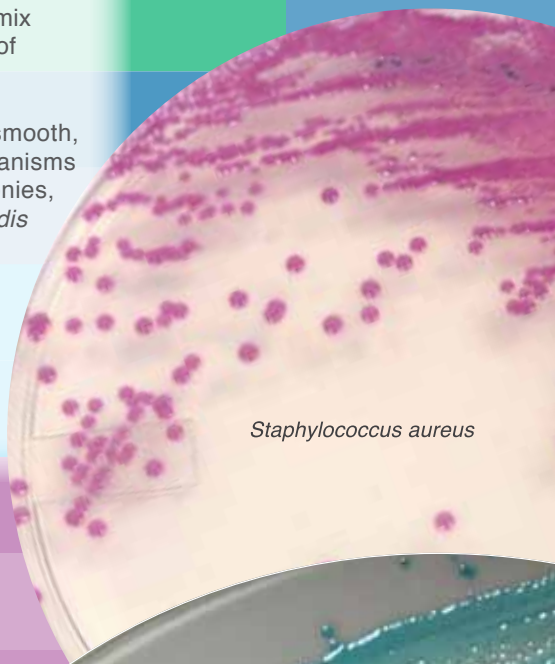
*Staphylococcus aureus* can be identified as smooth, pink-colored colonies on the plate. Other organisms may appear as colorless, blue, or cream colonies, or will be inhibited. *Staphylococcus epidermidis* will be inhibited.

### Ordering Information

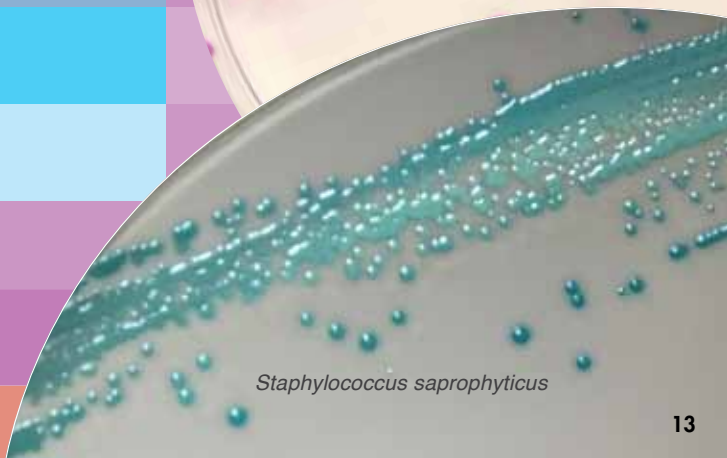
15x100mm plate, 10/pk.....G311



Online Ordering Available

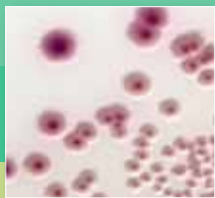


*Staphylococcus aureus*



*Staphylococcus saprophyticus*

# HardyCHROM™ UTI



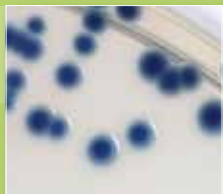
*Escherichia coli*



*Enterococcus faecalis*



*Pseudomonas aeruginosa*



*Klebsiella pneumoniae*



*Proteus mirabilis*



*Staphylococcus aureus*



*Staphylococcus saprophyticus*



*Citrobacter*



*Candida albicans*

## One plate does it all!

HardyCHROM™ UTI is a chromogenic culture medium that facilitates the isolation and differentiation of urinary tract pathogens. The development of various colors, due to chromogenic substances in the medium, allows for the differentiation of multiple microorganisms from the primary set-up of a urine specimen.

- *E. coli* produces magenta colonies (confirmatory, no further testing required).
- *Enterococcus faecalis/faecium* produces small, turquoise-colored colonies.
- *Pseudomonas* spp. produce light yellow, translucent colonies.
- *Klebsiella*, *Enterobacter*, and *Serratia* spp. produce large, deep blue colonies.
- *Proteus*, *Morganella*, and *Providencia* spp. produce clear to light yellow colonies with a diffuse golden-orange halo in the medium.
- *S. saprophyticus* produces opaque, pink colonies.
- *S. aureus* produces opaque, white-colored colonies.
- *Candida albicans* produces small, white-moist colonies.

### Ordering Information

UTI Plate, 15x100mm plate, 10/pk.....G313

UTI Plate, 15x100mm plate, 100/pk..G313BX

Blood Agar/UTI, biplate, 10/pk.....J119

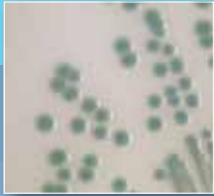
Rectangular omniplate, 30ml fill, 86x128mm, 10/pk.....G354



Online Ordering Available

# VIBRIO

## NEW Chromogenic Screening Medium for Vibrio!



*V. parahaemolyticus*



*V. alginolyticus*



*V. cholerae*



*V. vulnificus*

HardyCHROM™ VIBRIO HardyCHROM Vibrio is a selective and differential screening media recommended for the isolation of pathogenic Vibrio spp. from food and environmental sources.

HardyCHROM™ Vibrio was developed as a medium for differentiating *V. cholerae*, *V. parahaemolyticus*, and *V. vulnificus* from other Vibrios based on colony color. The shellfish pathogen *V. parahaemolyticus* is differentiated from other Vibrios such as *V. alginolyticus* by its teal coloration. The deadly pathogens *V. cholerae* and *V. vulnificus* are differentiated from other Vibrios by their magenta coloration, and from each other by the fluorescence of *V. vulnificus* under UV light. HardyCHROM™ is a fast, easy and cost effective way to screen and presumptively identify pathogenic Vibrio from food and environmental samples.

### Features:

- Only chromogenic media to differentiate *V. cholerae*, *V. parahaemolyticus* and *V. vulnificus*
- Saves time and money doing expensive molecular testing

Available at launch in Criterion as well as prepared plates

### Ordering Information

Blood 'Agar/UTI biplate, 10/pk....G319  
15x100mm plate, 10/pk.....

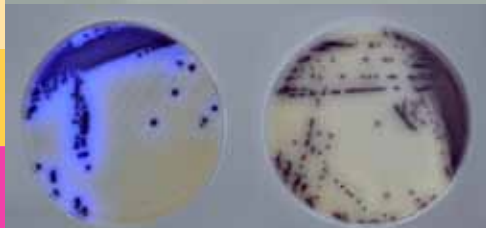


Online Ordering Available



*V. vulnificus*

*V. cholerae*



*V. vulnificus*

*V. cholerae*



*A Culture of Service™*

1430 West McCoy Lane

Santa Maria, CA 93455

[www.HardyDiagnostics.com](http://www.HardyDiagnostics.com) | [Sales@HardyDiagnostics.com](mailto:Sales@HardyDiagnostics.com)

Distribution Centers: California | Washington | Utah | Arizona  
Ohio | Texas | New York | Florida | North Carolina